

For Research Use Only

# SPPL2B Polyclonal antibody

Catalog Number: 27370-1-AP



## Basic Information

<b>Catalog Number:</b> 27370-1-AP	<b>GenBank Accession Number:</b> BC028391	<b>Purification Method:</b> Antigen affinity purification
<b>Size:</b> 150ul , Concentration: 730 ug/ml by Nanodrop;	<b>GeneID (NCBI):</b> 56928	<b>Recommended Dilutions:</b> WB: 1:500-1:2000 IHC: 1:50-1:500
<b>Source:</b> Rabbit	<b>UNIPROT ID:</b> Q8TCT7	
<b>Isotype:</b> IgG	<b>Full Name:</b> signal peptide peptidase-like 2B	
<b>Immunogen Catalog Number:</b> AG25551	<b>Calculated MW:</b> 65 kDa	
	<b>Observed MW:</b> 56 kDa	

## Applications

**Tested Applications:**  
WB, IHC, ELISA

**Species Specificity:**  
human, mouse

**Note-IHC: suggested antigen retrieval with TE buffer pH 9.0; (\*) Alternatively, antigen retrieval may be performed with citrate buffer pH 6.0**

**Positive Controls:**

WB : RT-4 cells,

IHC : mouse brain tissue,

## Background Information

SPPL2B (Signal Peptide Peptidase-Like 2B) is a multi-pass transmembrane aspartyl protease belonging to the GXGD family of intramembrane proteases. SPPL2B contains two conserved catalytic aspartate motifs localized within its membrane-spanning regions, similar to presenilins and  $\gamma$ -secretase. It localizes primarily to endosomes, lysosomes, and the plasma membrane, distinguishing it from ER-resident SPP and SPPL3. (PMID: 32052089, PMID: 19429495)

## Storage

**Storage:**

Store at -20°C. Stable for one year after shipment.

**Storage Buffer:**

PBS with 0.02% sodium azide and 50% glycerol, pH7.3

Aliquoting is unnecessary for -20°C storage

\*\*\* 20ul sizes contain 0.1% BSA

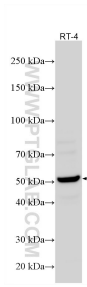
For technical support and original validation data for this product please contact:

T: 1 (888) 4PTGLAB (1-888-478-4522) (toll free in USA), or 1(312) 455-8498 (outside USA)

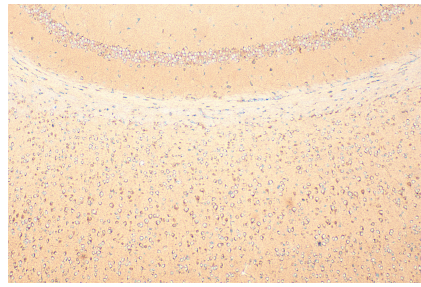
E: proteintech@ptglab.com  
W: ptglab.com

This product is exclusively available under Proteintech Group brand and is not available to purchase from any other manufacturer.

## Selected Validation Data



RT-4 cells were subjected to SDS PAGE followed by western blot with 27370-1-AP (SPPL2B antibody) at dilution of 1:1000 incubated at room temperature for 1.5 hours.



Immunohistochemical analysis of paraffin-embedded mouse brain tissue slide using 27370-1-AP (SPPL2B antibody) at dilution of 1:200 (under 10x lens). Heat mediated antigen retrieval with Tris-EDTA buffer (pH 9.0).