

For Research Use Only

SPPL2B Polyclonal antibody, PBS Only

Catalog Number: 27370-1-PBS



Basic Information

Catalog Number:

27370-1-PBS

Size:

100ug, Concentration: 1 mg/ml by Nanodrop;

Source:

Rabbit

Isotype:

IgG

Immunogen Catalog Number:

AG25551

GenBank Accession Number:

BC028391

GeneID (NCBI):

56928

UNIPROT ID:

Q8TCT7

Full Name:

signal peptide peptidase-like 2B

Calculated MW:

65 kDa

Observed MW:

56 kDa

Purification Method:

Antigen affinity purification

Applications

Tested Applications:

WB, Indirect ELISA

Species Specificity:

human

Background Information

SPPL2B (Signal Peptide Peptidase-Like 2B) is a multi-pass transmembrane aspartyl protease belonging to the GXGD family of intramembrane proteases. SPPL2B contains two conserved catalytic aspartate motifs localized within its membrane-spanning regions, similar to presenilins and γ -secretase. It localizes primarily to endosomes, lysosomes, and the plasma membrane, distinguishing it from ER-resident SPP and SPPL3. (PMID: 32052089, PMID: 19429495)

Storage

Storage:

Store at -80°C.

Storage Buffer:

PBS only, pH7.3

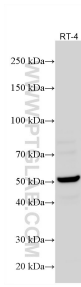
For technical support and original validation data for this product please contact:

T: 1 (888) 4PTGLAB (1-888-478-4522) (toll free in USA), or 1(312) 455-8498 (outside USA)

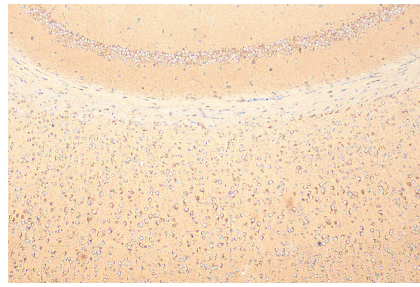
E: proteintech@ptglab.com
W: ptglab.com

This product is exclusively available under Proteintech Group brand and is not available to purchase from any other manufacturer.

Selected Validation Data



RT-4 cells were subjected to SDS PAGE followed by western blot with 27370-1-AP (SPPL2B antibody) at dilution of 1:1000 incubated at room temperature for 1.5 hours. This data was developed using the same antibody clone with 27370-1-PBS in a different storage buffer formulation.



Immunohistochemical analysis of paraffin-embedded mouse brain tissue slide using 27370-1-AP (SPPL2B antibody) at dilution of 1:200 (under 10x lens). Heat mediated antigen retrieval with Tris-EDTA buffer (pH 9.0). This data was developed using the same antibody clone with 27370-1-PBS in a different storage buffer formulation.