

For Research Use Only

CYSLTR1 Polyclonal antibody

Catalog Number: 27372-1-AP

3 Publications



Basic Information

Catalog Number:

27372-1-AP

Size:

150ul, Concentration: 300 ug/ml by Nanodrop and 267 ug/ml by Bradford method using BSA as the standard;

Source:

Rabbit

Isotype:

IgG

Immunogen Catalog Number:

AG24961

GenBank Accession Number:

BC035750

GeneID (NCBI):

10800

UNIPROT ID:

Q9Y271

Full Name:

cysteinyl leukotriene receptor 1

Calculated MW:

39 kDa

Observed MW:

39 kDa

Purification Method:

Antigen affinity purification

Recommended Dilutions:

WB 1:2000-1:16000

Applications

Tested Applications:

WB, ELISA

Cited Applications:

WB, IF

Species Specificity:

human, mouse, rat

Cited Species:

human, rat

Positive Controls:

WB: rat heart tissue, mouse heart tissue

Notable Publications

Author	Pubmed ID	Journal	Application
Shuying Yu	31933824	Int J Clin Exp Pathol	WB
Xuechao Li	38395001	J Pharm Biomed Anal	IF
Susanne M Brunner	37211287	Exp Eye Res	IF

Storage

Storage:

Store at -20°C. Stable for one year after shipment.

Storage Buffer:

PBS with 0.02% sodium azide and 50% glycerol pH 7.3.

Aliquoting is unnecessary for -20°C storage

*** 20ul sizes contain 0.1%BSA

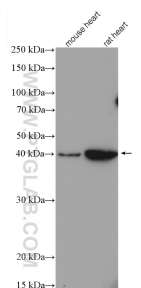
For technical support and original validation data for this product please contact:

T: 1 (888) 4PTGLAB (1-888-478-4522) (toll free in USA), or 1(312) 455-8498 (outside USA)

E: proteintech@ptglab.com
W: ptglab.com

This product is exclusively available under Proteintech Group brand and is not available to purchase from any other manufacturer.

Selected Validation Data



Various lysates were subjected to SDS PAGE followed by western blot with 27372-1-AP (CYSLTR1 antibody) at dilution of 1:8000 incubated at room temperature for 1.5 hours.