

For Research Use Only

# PPAP2B Polyclonal antibody

Catalog Number: 27391-1-AP



## Basic Information

Catalog Number:

27391-1-AP

Size:

150ul, Concentration: 400 ug/ml by Nanodrop;

Source:

Rabbit

Isotype:

IgG

Immunogen Catalog Number:

AG26422

GenBank Accession Number:

BC009196

GeneID (NCBI):

8613

UNIPROT ID:

O14495

Full Name:

phosphatidic acid phosphatase type 2B

Calculated MW:

35 kDa

Observed MW:

30-40 kDa

Purification Method:

Antigen affinity purification

Recommended Dilutions:

WB 1:500-1:2000

## Applications

Tested Applications:

WB, ELISA

Species Specificity:

human, mouse

Positive Controls:

WB : U-87 MG cells, human placenta tissue, mouse cerebellum tissue, mouse lung tissue

## Background Information

Phosphatidic acid phosphatase type 2B (PPAP2B), also known as Lipid phosphate phosphatase 3 (LPP3), is a member of the phosphatidic acid phosphatase (PAP) family. PPAP2B is an integral membrane protein that inactivates lysophosphatidic acid, was implicated in coronary artery disease (CAD) by genome-wide association studies (PMID: 26034042). PPAP2B can be detected at least two immunoreactive bands with different mobility, ranging from 36 to 50 kDa, which may reflect oligomer formation and/or post-translational protein modifications, such as glycosylation (PMID: 28364255).

## Storage

Storage:

Store at -20°C. Stable for one year after shipment.

Storage Buffer:

PBS with 0.02% sodium azide and 50% glycerol pH 7.3.

Aliquoting is unnecessary for -20°C storage

\*\*\* 20ul sizes contain 0.1% BSA

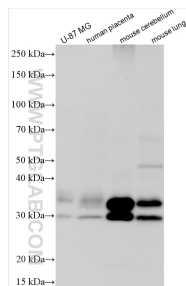
For technical support and original validation data for this product please contact:

T: 1 (888) 4PTGLAB (1-888-478-4522) (toll free in USA), or 1(312) 455-8498 (outside USA)

E: [proteintech@ptglab.com](mailto:proteintech@ptglab.com)  
W: [ptglab.com](http://ptglab.com)

This product is exclusively available under Proteintech Group brand and is not available to purchase from any other manufacturer.

## Selected Validation Data



Various lysates were subjected to SDS PAGE followed by western blot with 27391-1-AP (PPAP2B antibody) at dilution of 1:1000 incubated at room temperature for 1.5 hours.