

For Research Use Only

PPAP2B Polyclonal antibody, PBS Only

Catalog Number: 27391-1-PBS



Basic Information

Catalog Number: 27391-1-PBS	GenBank Accession Number: BC009196	Purification Method: Antigen affinity purification
Size: 100ug , Concentration: 1 mg/ml by Nanodrop;	GeneID (NCBI): 8613	
Source: Rabbit	UNIPROT ID: O14495	
Isotype: IgG	Full Name: phosphatidic acid phosphatase type 2B	
Immunogen Catalog Number: AG26422	Calculated MW: 35 kDa	
	Observed MW: 30-40 kDa	

Applications

Tested Applications:
WB, Indirect ELISA

Species Specificity:
human, mouse

Background Information

Phosphatidic acid phosphatase type 2B (PPAP2B), also known as Lipid phosphate phosphatase 3 (LPP3), is a member of the phosphatidic acid phosphatase (PAP) family. PPAP2B is an integral membrane protein that inactivates lysophosphatidic acid, was implicated in coronary artery disease (CAD) by genomewide association studies (PMID: 26034042). PPAP2B can be detected at least two immunoreactive bands with different mobility, ranging from 36 to 50 kDa, which may reflect oligomer formation and/or post-translational protein modifications, such as glycosylation (PMID: 28364255).

Storage

Storage:
Store at -80°C.

Storage Buffer:
PBS Only

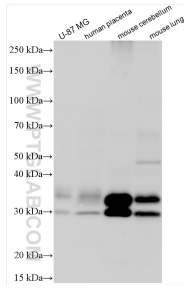
For technical support and original validation data for this product please contact:

T: 1 (888) 4PTGLAB (1-888-478-4522) (toll free in USA), or 1(312) 455-8498 (outside USA)

E: proteintech@ptglab.com
W: ptglab.com

This product is exclusively available under Proteintech Group brand and is not available to purchase from any other manufacturer.

Selected Validation Data



Various lysates were subjected to SDS PAGE followed by western blot with 27391-1-AP (PPAP2B antibody) at dilution of 1:1000 incubated at room temperature for 1.5 hours. This data was developed using the same antibody clone with 27391-1-PBS in a different storage buffer formulation.