

For Research Use Only

OTULIN Polyclonal antibody

Catalog Number: 27392-1-AP



Basic Information

Catalog Number:

27392-1-AP

Size:

150ul, Concentration: 700 ug/ml by Nanodrop;

Source:

Rabbit

Isotype:

IgG

Immunogen Catalog Number:

AG22302

GenBank Accession Number:

BC007706

GeneID (NCBI):

90268

UNIPROT ID:

Q96BN8

Full Name:

family with sequence similarity 105, member B

Calculated MW:

352 aa, 40 kDa

Observed MW:

40-50 kDa

Purification Method:

Antigen affinity purification

Recommended Dilutions:

WB 1:1000-1:4000

Applications

Tested Applications:

WB, ELISA

Species Specificity:

human

Positive Controls:

WB : HEK-293T cells, HeLa cells, Jurkat cells

Background Information

Linear ubiquitination is negatively regulated by OTULIN (OTU deubiquitinase with linear linkage specificity, also known as Fam105b or Gumbly), a deubiquitinase specifically catalysing the degradation of linear ubiquitin chains. OUb signalling is antagonised by deubiquitinases (DUBs), which cleave the polyUb signal from substrates to terminate signalling. OTU DUB with linear linkage specificity (OTULIN) and CYLD are the two main DUBs that regulate M1-polyUb signalling. OTULIN exclusively cleaves M1 linkages, whereas CYLD cleaves both M1 and K63 linkages. OTULIN binds directly to the LUBAC subunit HOIP and regulates LUBAC signalling, autoubiquitination, and stability. (PMID: 34625557, PMID: 32231246)

Storage

Storage:

Store at -20°C. Stable for one year after shipment.

Storage Buffer:

PBS with 0.02% sodium azide and 50% glycerol pH 7.3.

Aliquoting is unnecessary for -20°C storage

*** 20ul sizes contain 0.1% BSA

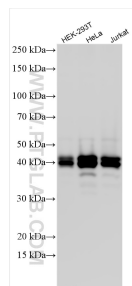
For technical support and original validation data for this product please contact:

T: 1 (888) 4PTGLAB (1-888-478-4522) (toll free in USA), or 1(312) 455-8498 (outside USA)

E: proteintech@ptglab.com
W: ptglab.com

This product is exclusively available under Proteintech Group brand and is not available to purchase from any other manufacturer.

Selected Validation Data



Various lysates were subjected to SDS PAGE followed by western blot with 27392-1-AP (OTULIN antibody) at dilution of 1:2000 incubated at room temperature for 1.5 hours.