

For Research Use Only

RGS8 Polyclonal antibody

Catalog Number: 27394-1-AP



Basic Information

Catalog Number: 27394-1-AP	GenBank Accession Number: BC069718	Purification Method: Antigen affinity purification
Size: 150ul , Concentration: 300 ug/ml by Nanodrop;	GeneID (NCBI): 85397	Recommended Dilutions: WB 1:500-1:2000
Source: Rabbit	UNIPROT ID: P57771	IHC 1:50-1:500
Isotype: IgG	Full Name: regulator of G-protein signaling 8	IF-P 1:50-1:500
Immunogen Catalog Number: AG26535	Calculated MW: 198 aa, 23 kDa	
	Observed MW: 21 kDa	

Applications

Tested Applications: WB, IHC, IF-P, ELISA	Positive Controls:
Species Specificity: human, mouse, rat	WB : mouse brain tissue, mouse liver tissue, rat brain tissue
Note-IHC: suggested antigen retrieval with TE buffer pH 9.0; (*) Alternatively, antigen retrieval may be performed with citrate buffer pH 6.0	IHC : mouse cerebellum tissue,
	IF-P : mouse cerebellum tissue,

Background Information

RGS8 is a member of the regulator of G protein signaling (RGS) family and encodes a protein with a single RGS domain. Regulator of G protein signaling (RGS) proteins are regulatory and structural components of G protein-coupled receptor complexes. They accelerate transit through the cycle of GTP binding and hydrolysis to GDP, thereby terminating signal transduction, but paradoxically, also accelerate receptor-stimulated activation.

Storage

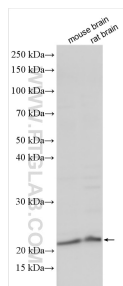
Storage:
Store at -20°C. Stable for one year after shipment.
Storage Buffer:
PBS with 0.02% sodium azide and 50% glycerol pH 7.3.
Aliquoting is unnecessary for -20°C storage

*** 20ul sizes contain 0.1% BSA

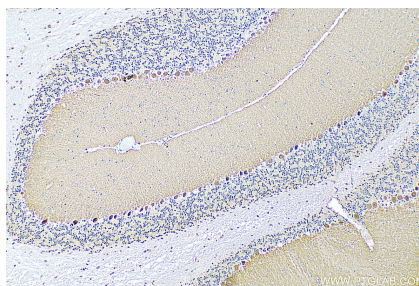
For technical support and original validation data for this product please contact:
T: 1 (888) 4PTGLAB (1-888-478-4522) (toll free in USA), or 1(312) 455-8498 (outside USA)
E: proteintech@ptglab.com
W: ptglab.com

This product is exclusively available under Proteintech Group brand and is not available to purchase from any other manufacturer.

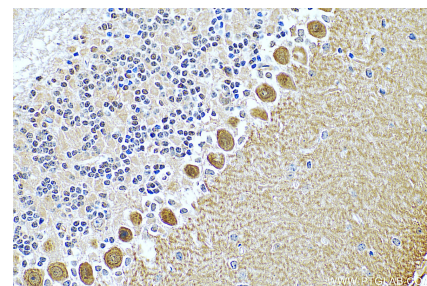
Selected Validation Data



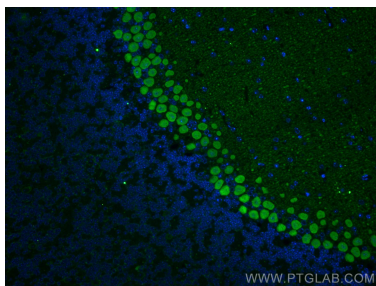
Various lysates were subjected to SDS PAGE followed by western blot with 27394-1-AP (RGS8 antibody) at dilution of 1:1000 incubated at room temperature for 1.5 hours.



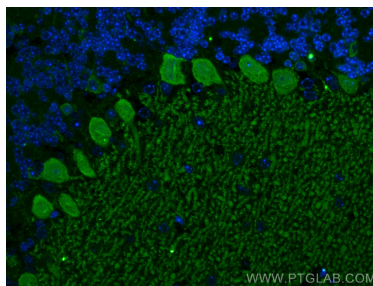
Immunohistochemical analysis of paraffin-embedded mouse cerebellum tissue slide using 27394-1-AP (RGS8 antibody) at dilution of 1:200 (under 10x lens). Heat mediated antigen retrieval with Tris-EDTA buffer (pH 9.0).



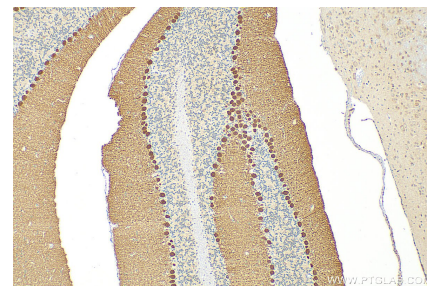
Immunohistochemical analysis of paraffin-embedded mouse cerebellum tissue slide using 27394-1-AP (RGS8 antibody) at dilution of 1:200 (under 40x lens). Heat mediated antigen retrieval with Tris-EDTA buffer (pH 9.0).



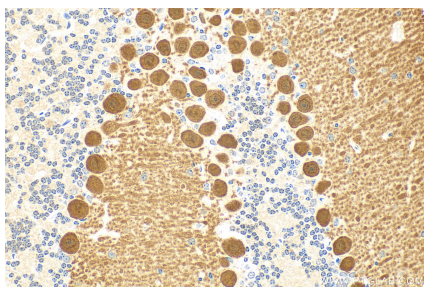
Immunofluorescent analysis of (4% PFA) fixed mouse cerebellum tissue using RGS8 antibody (27394-1-AP) at dilution of 1:200 and CoraLite®488-Conjugated AffiniPure Goat Anti-Rabbit IgG(H+L).



Immunofluorescent analysis of (4% PFA) fixed mouse cerebellum tissue using RGS8 antibody (27394-1-AP) at dilution of 1:200 and CoraLite®488-Conjugated AffiniPure Goat Anti-Rabbit IgG(H+L).



Immunohistochemical analysis of paraffin-embedded mouse cerebellum tissue slide using 27394-1-AP (RGS8 antibody) at dilution of 1:200 (under 10x lens). Heat mediated antigen retrieval with Tris-EDTA buffer (pH 9.0).



Immunohistochemical analysis of paraffin-embedded mouse cerebellum tissue slide using 27394-1-AP (RGS8 antibody) at dilution of 1:200 (under 40x lens). Heat mediated antigen retrieval with Tris-EDTA buffer (pH 9.0).