

For Research Use Only

PD-L2/CD273 Polyclonal antibody

Catalog Number: 27406-1-AP



Basic Information

Catalog Number:

27406-1-AP

Size:

150ul, Concentration: 450 ug/ml by Nanodrop;

Source:

Rabbit

Isotype:

IgG

Immunogen Catalog Number:

AG26384

GenBank Accession Number:

BC074766

GeneID (NCBI):

80380

UNIPROT ID:

Q9BQ51

Full Name:

programmed cell death 1 ligand 2

Calculated MW:

273 aa, 31 kDa

Observed MW:

45 kDa

Purification Method:

Antigen affinity purification

Recommended Dilutions:

WB 1:500-1:3000

IF/ICC 1:200-1:800

Applications

Tested Applications:

WB, IF/ICC, ELISA

Species Specificity:

human, mouse, rat

Positive Controls:

WB : NIH/3T3 cells, Raji cells, mouse heart tissue, rat heart tissue

IF/ICC : NIH/3T3 cells,

Background Information

Programmed cell death 1 ligand 2 (PDCD1LG2), also known as PD-L2, CD273 and B7-DC, is an immune checkpoint receptor ligand which plays a role in negative regulation of the adaptive immune response. PDCD1LG2/PD-L2 protein is expressed mainly by dendritic cells, macrophages, and tumor cells, and down-regulates the effector functions of T cells via PD-1/PD-L2 axis in the tumor microenvironment (PMID: 30275216). The endogenous PDCD1LG2/PD-L2 protein displays a molecular weight of 45 kDa (glycosylated form), and a minor band at 35 kDa (non-glycosylated form) in western blot (PMID: 28811964, PMID: 34697216).

Storage

Storage:

Store at -20°C. Stable for one year after shipment.

Storage Buffer:

PBS with 0.02% sodium azide and 50% glycerol pH 7.3.

Aliquoting is unnecessary for -20°C storage

*** 20ul sizes contain 0.1% BSA

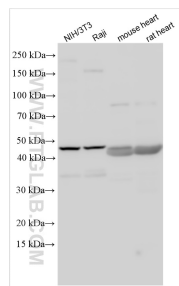
For technical support and original validation data for this product please contact:

T: 1 (888) 4PTGLAB (1-888-478-4522) (toll free in USA), or 1(312) 455-8498 (outside USA)

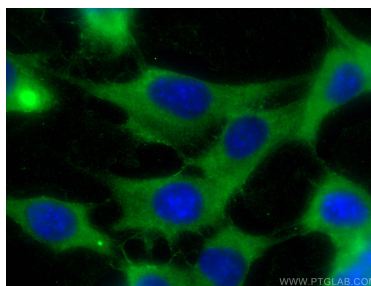
E: proteintech@ptglab.com
W: ptglab.com

This product is exclusively available under Proteintech Group brand and is not available to purchase from any other manufacturer.

Selected Validation Data



Various lysates were subjected to SDS PAGE followed by western blot with 27406-1-AP (PDCD1LG2/PD-L2 antibody) at dilution of 1:1500 incubated at room temperature for 1.5 hours.



Immunofluorescent analysis of (-20°C Ethanol) fixed NIH/3T3 cells using PDCD1LG2/PD-L2 antibody (27406-1-AP) at dilution of 1:400 and CoraLite®488-Conjugated AffiniPure Goat Anti-Rabbit IgG(H+L).