

For Research Use Only

# ELK1 Polyclonal antibody

Catalog Number: 27420-1-AP

Featured Product

8 Publications



## Basic Information

### Catalog Number:

27420-1-AP

### Size:

150ul, Concentration: 1200 ug/ml by Nanodrop and 600 ug/ml by Bradford method using BSA as the standard;

### Source:

Rabbit

### Isotype:

IgG

### Immunogen Catalog Number:

AG26683

### GenBank Accession Number:

BC056150

### GeneID (NCBI):

2002

### UNIPROT ID:

P19419

### Full Name:

ELK1, member of ETS oncogene family

### Calculated MW:

45 kDa

### Observed MW:

62 kDa

### Purification Method:

Antigen affinity purification

### Recommended Dilutions:

WB 1:1000-1:6000

## Applications

### Tested Applications:

WB, ELISA

### Cited Applications:

WB, IF, IHC, ChIP

### Species Specificity:

human

### Cited Species:

human, rat, mouse

### Positive Controls:

WB : HEK-293 cells, HepG2 cells, HeLa cells, K-562 cells

## Notable Publications

Author	Pubmed ID	Journal	Application
Ranran Sun	33008587	Biochem Biophys Res Commun	WB
Akhlaq Ahmad	29892795	Genes Genomics	WB
Xue Li	35351142	J Transl Med	IHC

## Storage

### Storage:

Store at -20°C. Stable for one year after shipment.

### Storage Buffer:

PBS with 0.02% sodium azide and 50% glycerol pH 7.3.

Aliquoting is unnecessary for -20°C storage

\*\*\* 20ul sizes contain 0.1% BSA

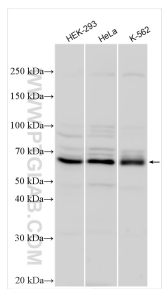
For technical support and original validation data for this product please contact:

T: 1 (888) 4PTGLAB (1-888-478-4522) (toll free in USA), or 1(312) 455-8498 (outside USA)

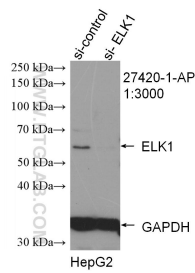
E: [proteintech@ptglab.com](mailto:proteintech@ptglab.com)  
W: [ptglab.com](http://ptglab.com)

This product is exclusively available under Proteintech Group brand and is not available to purchase from any other manufacturer.

## Selected Validation Data



Various lysates were subjected to SDS PAGE followed by western blot with 27420-1-AP (ELK1 antibody) at dilution of 1:3000 incubated at room temperature for 1.5 hours.



WB result of ELK1 antibody (27420-1-AP; 1:3000; incubated at room temperature for 1.5 hours) with sh-Control and sh-ELK1 transfected HepG2 cells.