

For Research Use Only

# PRR11 Polyclonal antibody

Catalog Number: 27422-1-AP



## Basic Information

Catalog Number:

27422-1-AP

Size:

150ul , Concentration: 350 ug/ml by Nanodrop;

Source:

Rabbit

Isotype:

IgG

Immunogen Catalog Number:

AG26636

GenBank Accession Number:

BC008669

GeneID (NCBI):

55771

UNIPROT ID:

Q96HE9

Full Name:

proline rich 11

Calculated MW:

360 aa, 40 kDa

Observed MW:

38 kDa

Purification Method:

Antigen affinity purification

Recommended Dilutions:

WB 1:1000-1:5000

## Applications

Tested Applications:

WB, ELISA

Species Specificity:

human

Positive Controls:

WB : A549 cells, HeLa cells, L02 cells, MCF-7 cells

## Background Information

PRR11, or Proline-rich protein 11, is a protein-coding gene situated on chromosome 17q22-23, which plays a significant role in various cellular processes. The protein itself is composed of a nuclear localization signal (NLS), two proline-rich regions (PRs), and a zinc finger domain (ZFD) (PMID: 36551227). PRR11 has been implicated in the regulation of cell cycle, and it is involved in multiple aspects of cancer biology, including proliferation, migration, invasion, cell-cycle progression, apoptosis, autophagy, and chemotherapy resistance. It serves as a prognostic indicator in certain human cancers and is considered a potential target for therapeutic interventions (PMID: 36739300).

## Storage

Storage:

Store at -20°C. Stable for one year after shipment.

Storage Buffer:

PBS with 0.02% sodium azide and 50% glycerol pH 7.3.

Aliquoting is unnecessary for -20°C storage

\*\*\* 20ul sizes contain 0.1% BSA

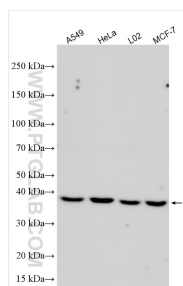
For technical support and original validation data for this product please contact:

T: 1 (888) 4PTGLAB (1-888-478-4522) (toll free in USA), or 1(312) 455-8498 (outside USA)

E: [proteintech@ptglab.com](mailto:proteintech@ptglab.com)  
W: [ptglab.com](http://ptglab.com)

This product is exclusively available under Proteintech Group brand and is not available to purchase from any other manufacturer.

## Selected Validation Data



Various lysates were subjected to SDS PAGE followed by western blot with 27422-1-AP (PRR11 antibody) at dilution of 1:2500 incubated at room temperature for 1.5 hours.