

For Research Use Only

# NPPA Polyclonal antibody

Catalog Number: 27426-1-AP

54 Publications



## Basic Information

<b>Catalog Number:</b> 27426-1-AP	<b>GenBank Accession Number:</b> BC005893	<b>Purification Method:</b> Antigen affinity purification
<b>Size:</b> 150ul , Concentration: 600 ug/ml by Nanodrop;	<b>GeneID (NCBI):</b> 4878	<b>Recommended Dilutions:</b> WB 1:2000-1:16000
<b>Source:</b> Rabbit	<b>UNIPROT ID:</b> P01160	<b>IHC 1:50-1:500</b> <b>IF/ICC 1:50-1:500</b>
<b>Isotype:</b> IgG	<b>Full Name:</b> natriuretic peptide precursor A	
<b>Immunogen Catalog Number:</b> AG26692	<b>Calculated MW:</b> 153 aa, 17 kDa	
	<b>Observed MW:</b> 19 kDa	

## Applications

<b>Tested Applications:</b> WB, IHC, IF/ICC, ELISA	<b>Positive Controls:</b> WB : mouse heart tissue, rat heart tissue
<b>Cited Applications:</b> WB, IHC, ELISA	<b>IHC :</b> mouse heart tissue, human heart tissue
<b>Species Specificity:</b> human, mouse, rat	<b>IF/ICC :</b> C2C12 cells, HeLa cells
<b>Cited Species:</b> human, mouse, rat, goat	
<b>Note-IHC: suggested antigen retrieval with TE buffer pH 9.0; (*) Alternatively, antigen retrieval may be performed with citrate buffer pH 6.0</b>	

## Background Information

Natriuretic peptide precursor-A (NPPA) is an early and specific marker for functional myocardium of the embryonic heart. This protein is synthesized as a large precursor (containing a signal peptide), which is processed to release a peptide from the N-terminus with similarity to vasoactive peptide, cardiodilatin, and another peptide from the C-terminus with natriuretic-diuretic activity. NPPA is expressed primarily in the heart, where the expression level is higher in atria than ventricles. Low levels of ANP expression have been detected in other tissues, including the lung, aorta, brain, adrenal gland, kidney and uterus.

## Notable Publications

Author	Pubmed ID	Journal	Application
Yuxiang Wang	35881904	J Cardiovasc Pharmacol	WB
Jiali Nie	30488495	J Cell Physiol	WB
Xingda Li	35661710	Pharmacol Res	WB

## Storage

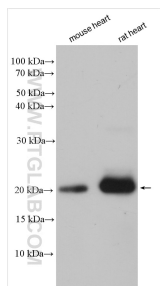
**Storage:**  
Store at -20°C. Stable for one year after shipment.  
**Storage Buffer:**  
PBS with 0.02% sodium azide and 50% glycerol, pH7.3  
**Aliquoting is unnecessary for -20°C storage**

\*\*\* 20ul sizes contain 0.1% BSA

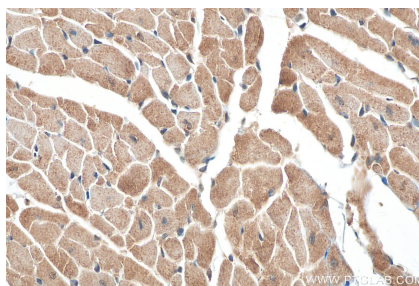
For technical support and original validation data for this product please contact:  
T: 1 (888) 4PTGLAB (1-888-478-4522) (toll free in USA), or 1(312) 455-8498 (outside USA)  
E: proteintech@ptglab.com  
W: ptglab.com

This product is exclusively available under Proteintech Group brand and is not available to purchase from any other manufacturer.

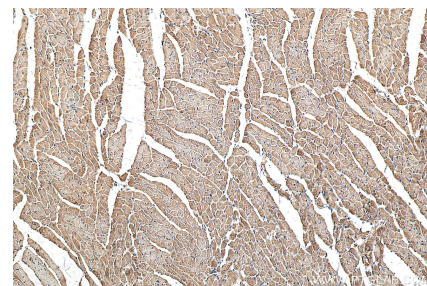
## Selected Validation Data



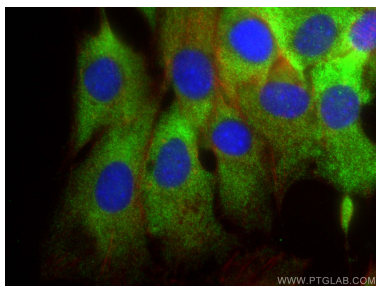
Various lysates were subjected to SDS PAGE followed by western blot with 27426-1-AP (NPPA antibody) at dilution of 1:8000 incubated at room temperature for 1.5 hours.



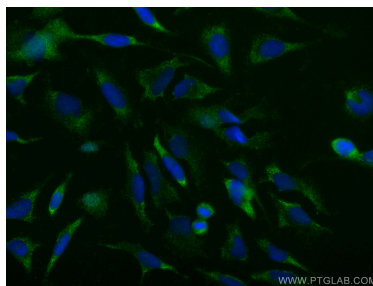
Immunohistochemical analysis of paraffin-embedded mouse heart tissue slide using 27426-1-AP (NPPA antibody) at dilution of 1:200 (under 40x lens). Heat mediated antigen retrieval with Tris-EDTA buffer (pH 9.0).



Immunohistochemical analysis of paraffin-embedded mouse heart tissue slide using 27426-1-AP (NPPA antibody) at dilution of 1:200 (under 10x lens). Heat mediated antigen retrieval with Tris-EDTA buffer (pH 9.0).



Immunofluorescent analysis of (-20°C Ethanol) fixed C2C12 cells using NPPA antibody (27426-1-AP) at dilution of 1:200 and CoraLite®488-Conjugated Goat Anti-Rabbit IgG(H+L), CL594-Phalloidin (red).



Immunofluorescent analysis of (-20°C Ethanol) fixed HeLa cells using NPPA antibody (27426-1-AP) at dilution of 1:200 and CoraLite®488-Conjugated Goat Anti-Rabbit IgG(H+L).