

For Research Use Only

# NODAL Polyclonal antibody

Catalog Number: 27430-1-AP



## Basic Information

<b>Catalog Number:</b> 27430-1-AP	<b>GenBank Accession Number:</b> BC104976	<b>Purification Method:</b> Antigen affinity purification
<b>Size:</b> 150ul , Concentration: 200 µg/ml by Nanodrop;	<b>GeneID (NCBI):</b> 4838	<b>Recommended Dilutions:</b> WB 1:1000-1:4000 IHC 1:50-1:500 IF 1:200-1:800
<b>Source:</b> Rabbit	<b>Full Name:</b> nodal homolog (mouse)	
<b>Isotype:</b> IgG	<b>Calculated MW:</b> 347 aa, 40 kDa	
<b>Immunogen Catalog Number:</b> AG26729	<b>Observed MW:</b> 45 kDa	

## Applications

**Tested Applications:**  
FC, IF, IHC, WB, ELISA

**Species Specificity:**  
human

**Note-IHC: suggested antigen retrieval with TE buffer pH 9.0; (\*) Alternatively, antigen retrieval may be performed with citrate buffer pH 6.0**

**Positive Controls:**

**WB :** HeLa cells,

**IHC :** human stomach cancer tissue, human endometrial cancer tissue

**IF :** HeLa cells,

## Background Information

### Storage

**Storage:**

Store at -20°C. Stable for one year after shipment.

**Storage Buffer:**

PBS with 0.02% sodium azide and 50% glycerol pH 7.3.

Aliquoting is unnecessary for -20°C storage

\*\*\* 20ul sizes contain 0.1% BSA

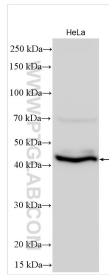
For technical support and original validation data for this product please contact:

T: 1 (888) 4PTGLAB (1-888-478-4522) (toll free in USA), or 1(312) 455-8498 (outside USA)

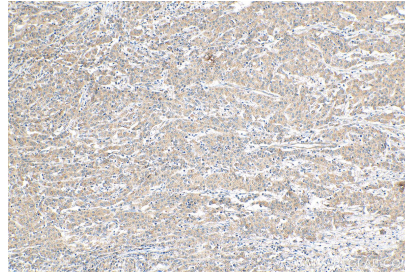
E: [proteintech@ptglab.com](mailto:proteintech@ptglab.com)  
W: [ptglab.com](http://ptglab.com)

This product is exclusively available under Proteintech Group brand and is not available to purchase from any other manufacturer.

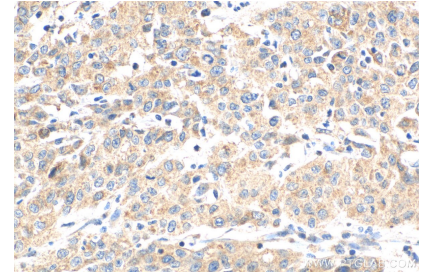
## Selected Validation Data



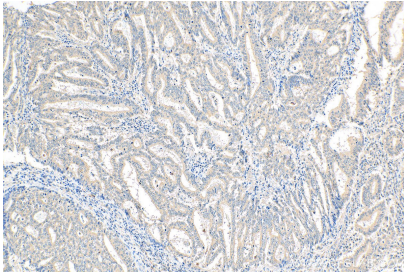
HeLa cells were subjected to SDS PAGE followed by western blot with 27430-1-AP (NODAL antibody) at dilution of 1:2000 incubated at room temperature for 1.5 hours.



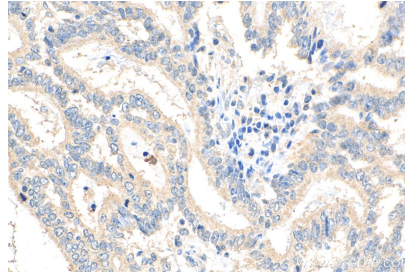
Immunohistochemical analysis of paraffin-embedded human stomach cancer tissue slide using 27430-1-AP (NODAL antibody) at dilution of 1:200 (under 10x lens). Heat mediated antigen retrieval with Tris-EDTA buffer (pH 9.0).



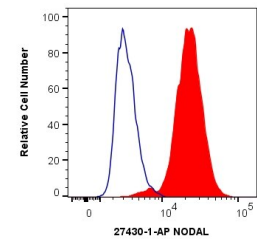
Immunohistochemical analysis of paraffin-embedded human stomach cancer tissue slide using 27430-1-AP (NODAL antibody) at dilution of 1:200 (under 40x lens). Heat mediated antigen retrieval with Tris-EDTA buffer (pH 9.0).



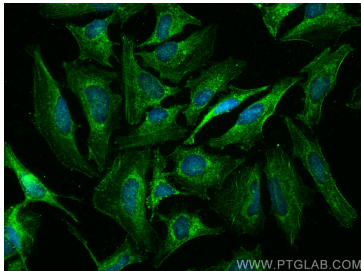
Immunohistochemical analysis of paraffin-embedded human endometrial cancer tissue slide using 27430-1-AP (NODAL antibody) at dilution of 1:200 (under 10x lens). Heat mediated antigen retrieval with Tris-EDTA buffer (pH 9.0).



Immunohistochemical analysis of paraffin-embedded human endometrial cancer tissue slide using 27430-1-AP (NODAL antibody) at dilution of 1:200 (under 40x lens). Heat mediated antigen retrieval with Tris-EDTA buffer (pH 9.0).



$1 \times 10^6$  HEK-293T cells were intracellularly stained with 0.4 ug Anti-Human NODAL (27430-1-AP) and CoraLite®488-Conjugated AffiniPure Goat Anti-Rabbit IgG(H+L) at dilution 1:1000 (red), or 0.4 ug Isotype Control. Cells were fixed with 4% PFA and permeabilized with Flow Cytometry Perm Buffer (PF00011-C).



Immunofluorescent analysis of (-20°C Ethanol) fixed HeLa cells using NODAL antibody (27430-1-AP) at dilution of 1:400 and CoraLite®488-Conjugated AffiniPure Goat Anti-Rabbit IgG(H+L).