

For Research Use Only

TUBD1 Polyclonal antibody

Catalog Number: 27433-1-AP



Basic Information

Catalog Number:

27433-1-AP

Size:

150ul, Concentration: 1000 ug/ml by Nanodrop;

Source:

Rabbit

Isotype:

IgG

Immunogen Catalog Number:

AG26626

GenBank Accession Number:

BC000258

GeneID (NCBI):

51174

UNIPROT ID:

Q9UJT1

Full Name:

tubulin, delta 1

Calculated MW:

51 kDa

Observed MW:

44 kDa

Purification Method:

Antigen affinity purification

Recommended Dilutions:

WB 1:500-1:3000

Applications

Tested Applications:

WB, ELISA

Species Specificity:

human

Positive Controls:

WB : HEK-293 cells, HeLa cells, Jurkat cells

Background Information

TUBD1, also named as TUBD, Tubulin delta chain, tubulin delta 1. The TUBD1 gene encodes a centrosomal protein of 453-amino acids with a molecular mass of 51 kD containing the canonical GTP-binding domain shared with other tubulins. TUBD1 mRNA is preferentially expressed in the sperm head, but it has been also detected in retina, heart, muscle, thyroid, ovary, and colon, among other tissues. At least 6 isoforms of the human protein are produced by alternative splicing (PMID: 28137601). The molecular weights of these 6 isoforms are 51, 45, 22, 27, 44, and 40 kDa, respectively.

Storage

Storage:

Store at -20°C. Stable for one year after shipment.

Storage Buffer:

PBS with 0.02% sodium azide and 50% glycerol pH 7.3.

Aliquoting is unnecessary for -20°C storage

*** 20ul sizes contain 0.1% BSA

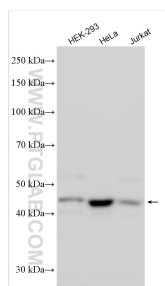
For technical support and original validation data for this product please contact:

T: 1 (888) 4PTGLAB (1-888-478-4522) (toll free in USA), or 1(312) 455-8498 (outside USA)

E: proteintech@ptglab.com
W: ptglab.com

This product is exclusively available under Proteintech Group brand and is not available to purchase from any other manufacturer.

Selected Validation Data



Various lysates were subjected to SDS PAGE followed by western blot with 27433-1-AP (TUBD1 antibody) at dilution of 1:1500 incubated at room temperature for 1.5 hours.