

For Research Use Only

RAB34 Polyclonal antibody

Catalog Number: 27435-1-AP

Featured Product

6 Publications



Basic Information

Catalog Number:

27435-1-AP

Size:

150ul, Concentration: 650 ug/ml by Nanodrop and 367 ug/ml by Bradford method using BSA as the standard;

Source:

Rabbit

Isotype:

IgG

Immunogen Catalog Number:

AG26696

GenBank Accession Number:

BC016841

GeneID (NCBI):

83871

UNIPROT ID:

Q9BZG1

Full Name:

RAB34, member RAS oncogene family

Calculated MW:

251 aa, 28 kDa

Observed MW:

29 kDa

Purification Method:

Antigen affinity purification

Recommended Dilutions:

WB 1:1000-1:4000

IHC 1:50-1:500

Applications

Tested Applications:

WB, IHC, ELISA

Cited Applications:

WB, IF

Species Specificity:

human

Cited Species:

human, mouse

Note-IHC: suggested antigen retrieval with TE buffer pH 9.0; (*) Alternatively, antigen retrieval may be performed with citrate buffer pH 6.0

Positive Controls:

WB : A431 cells, HeLa cells, U2OS cells, A549 cells

IHC : human ovary cancer tissue,

Background Information

RAB34, a Rab protein family member, is involved in repositioning of lysosomes, activation of micropinocytosis, and protein transport. RAB34 is aberrantly expressed in various cancers and exhibits oncogenic properties. Recently, Rab34 is identified as a ciliary protein. Rab34 is required for internal assembly of cilia but not for cilia built on the cell surface.

Notable Publications

Author	Pubmed ID	Journal	Application
Anil Kumar Ganga	33989527	Curr Biol	IF, WB
Ange-Line Bruel	37384395	Hum Mol Genet	WB
Nikolina Piteša	37239024	Biomedicines	WB, IF

Storage

Storage:

Store at -20°C. Stable for one year after shipment.

Storage Buffer:

PBS with 0.02% sodium azide and 50% glycerol pH 7.3.

Aliquoting is unnecessary for -20°C storage

*** 20ul sizes contain 0.1% BSA

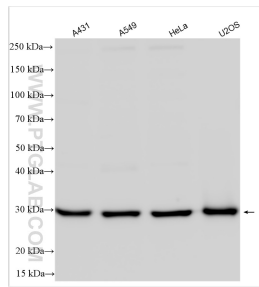
For technical support and original validation data for this product please contact:

T: 1 (888) 4PTGLAB (1-888-478-4522) (toll free in USA), or 1(312) 455-8498 (outside USA)

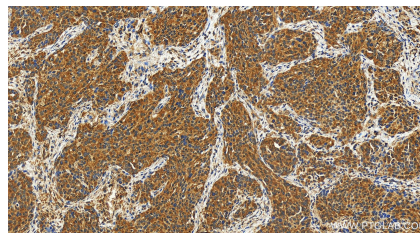
E: proteintech@ptglab.com
W: ptglab.com

This product is exclusively available under Proteintech Group brand and is not available to purchase from any other manufacturer.

Selected Validation Data



Various lysates were subjected to SDS PAGE followed by western blot with 27435-1-AP (RAB34 antibody) at dilution of 1:2000 incubated at room temperature for 1.5 hours.



Immunohistochemical analysis of paraffin-embedded human ovary cancer tissue slide using 27435-1-AP (RAB34 antibody) at dilution of 1:200 (under 20x lens). Heat mediated antigen retrieval with Tris-EDTA buffer (pH 9.0).