

For Research Use Only

GDF15 Polyclonal antibody

Catalog Number: 27455-1-AP

Featured Product

25 Publications



Basic Information

Catalog Number: 27455-1-AP	GenBank Accession Number: BC008962	Purification Method: Antigen affinity purification
Size: 150ul , Concentration: 500 µg/ml by Nanodrop;	GeneID (NCBI): 9518	Recommended Dilutions: WB 1:2000-1:10000 IHC 1:50-1:500
Source: Rabbit	UNIPROT ID: Q99988	
Isotype: IgG	Full Name: growth differentiation factor 15	
Immunogen Catalog Number: AG26760	Calculated MW: 34 kDa	
	Observed MW: 34 kDa	

Applications

Tested Applications: WB, IHC, ELISA	Positive Controls: WB : HT-1080 cells, HepG2 cells, human placenta tissue, LNCaP cells IHC : human placenta tissue, mouse placenta tissue
Cited Applications: WB, IF, IHC	
Species Specificity: human, mouse	
Cited Species: human, rat, mouse	

Note-IHC: suggested antigen retrieval with TE buffer pH 9.0; (*) Alternatively, antigen retrieval may be performed with citrate buffer pH 6.0

Background Information

Growth differentiation factor 15 (GDF15), also known as macrophage inhibitory cytokine-1 (MIC-1), is a protein of the transforming growth factor beta (TGFβ) superfamily that regulates inflammatory and apoptotic pathways in injured tissues and during disease processes. GDF15 is a stress-induced cytokine and associated with hypoxia, inflammation and oxidative stress, it is also released from endothelial cells after stimulation with pro-inflammatory cytokines. GDF15 has been suggested as a target and biomarker for cardiovascular disease as it plays a cardioprotective role in the adult heart. GDF15 is highly expressed in the placenta. GDF15 is known to be involved in human embryo development and necessary for the maintenance of pregnancy. GDF15 is also produced by adipocytes in response to oxidative stress, a well-known factor associated with preeclampsia.

Notable Publications

Author	Pubmed ID	Journal	Application
Xinrui Zhao	36142823	Int J Mol Sci	WB
Jingliu Liu	36398249	Am J Transl Res	WB
Lihua Wang	33260632	Antioxidants (Basel)	WB

Storage

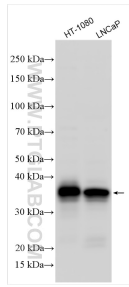
Storage:
Store at -20°C. Stable for one year after shipment.
Storage Buffer:
PBS with 0.02% sodium azide and 50% glycerol pH 7.3.
Aliquoting is unnecessary for -20°C storage

*** 20ul sizes contain 0.1% BSA

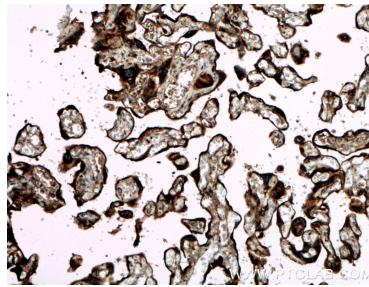
For technical support and original validation data for this product please contact:
T: 1 (888) 4PTGLAB (1-888-478-4522) (toll free in USA), or 1(312) 455-8498 (outside USA)
E: proteintech@ptglab.com
W: ptglab.com

This product is exclusively available under Proteintech Group brand and is not available to purchase from any other manufacturer.

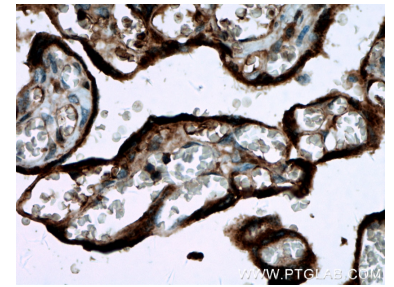
Selected Validation Data



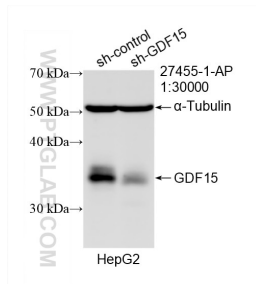
Various lysates were subjected to SDS PAGE followed by western blot with 27455-1-AP (GDF15 antibody) at dilution of 1:5000 incubated at room temperature for 1.5 hours.



Immunohistochemical analysis of paraffin-embedded human placenta tissue slide using 27455-1-AP (GDF15 antibody) at dilution of 1:200 (under 10x lens. Heat mediated antigen retrieval with Tris-EDTA buffer (pH 9.0).



Immunohistochemical analysis of paraffin-embedded human placenta tissue slide using 27455-1-AP (GDF15 antibody) at dilution of 1:200 (under 40x lens. Heat mediated antigen retrieval with Tris-EDTA buffer (pH 9.0).



WB result of GDF15 antibody (27455-1-AP; 1:30000; incubated at room temperature for 1.5 hours) with sh-Control and sh-GDF15 transfected HepG2 cells.