

For Research Use Only

PLCB2 Polyclonal antibody

Catalog Number: 27456-1-AP



Basic Information

Catalog Number: 27456-1-AP	GenBank Accession Number: BC000939	Purification Method: Antigen affinity purification
Size: 150ul , Concentration: 800 ug/ml by Nanodrop;	GeneID (NCBI): 5330	Recommended Dilutions: WB 1:500-1:3000
Source: Rabbit	UNIPROT ID: Q00722	IHC 1:300-1:1200
Isotype: IgG	Full Name: phospholipase C, beta 2	IF/ICC 1:50-1:500
Immunogen Catalog Number: AG25771	Calculated MW: 134 kDa	
	Observed MW: 134 kDa	

Applications

Tested Applications: WB, IHC, IF/ICC, ELISA	Positive Controls:
Species Specificity: human	WB : THP-1 cells, HL-60 cells
Note-IHC: suggested antigen retrieval with TE buffer pH 9.0; (*) Alternatively, antigen retrieval may be performed with citrate buffer pH 6.0	IHC : mouse liver tissue,
	IF/ICC : THP-1 cells,

Background Information

PLCB2 (1-phosphatidylinositol 4,5-bisphosphate phosphodiesterase beta-2) is also named as PLC-beta-2. PLCB2 is a critical regulator of platelet responses upon activation (PMID: 27465150). NF- κ B regulates expression of PLC- β 2. The PLCB2 genes was found to be differentially expressed in human breast cancer MCF-7 cells, and to be associated with multidrug resistance (PMID: 2951275). The knockdown of PLCB2 suppressed cell viability and promoted cell apoptosis by activating the Ras/Raf/MAPK pathway. Thus, PLCB2 may utilized as a potential therapeutic target in patients with melanoma (PMID: 31746389).

Storage

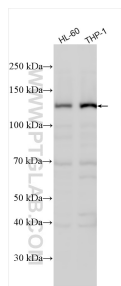
Storage:
Store at -20°C. Stable for one year after shipment.
Storage Buffer:
PBS with 0.02% sodium azide and 50% glycerol pH 7.3.
Aliquoting is unnecessary for -20°C storage

*** 20ul sizes contain 0.1% BSA

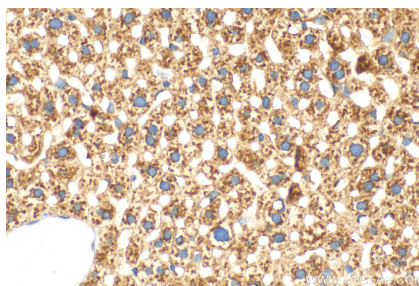
For technical support and original validation data for this product please contact:
T: 1 (888) 4PTGLAB (1-888-478-4522) (toll free in USA), or 1(312) 455-8498 (outside USA)
E: proteintech@ptglab.com
W: ptglab.com

This product is exclusively available under Proteintech Group brand and is not available to purchase from any other manufacturer.

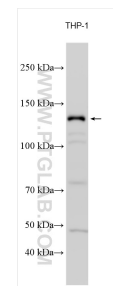
Selected Validation Data



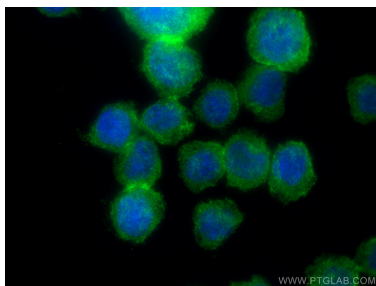
Various lysates were subjected to SDS PAGE followed by western blot with 27456-1-AP (PLCB2 antibody) at dilution of 1:500 incubated at room temperature for 1.5 hours.



Immunohistochemical analysis of paraffin-embedded mouse liver tissue slide using 27456-1-AP (PLCB2 antibody) at dilution of 1:600 (under 40x lens). Heat mediated antigen retrieval with Tris-EDTA buffer (pH 9.0).



Various lysates were subjected to SDS PAGE followed by western blot with 27456-1-AP (PLCB2 antibody) at dilution of 1:1500 incubated at room temperature for 1.5 hours.



Immunofluorescent analysis of (4% PFA) fixed THP-1 cells using PLCB2 antibody (27456-1-AP) at dilution of 1:200 and Coralite® 488-Conjugated AffiniPure Goat Anti-Rabbit IgG(H+L) (SA00013-2).