

For Research Use Only

# RRAS Polyclonal antibody

Catalog Number: 27457-1-AP

5 Publications



## Basic Information

### Catalog Number:

27457-1-AP

### Size:

150ul, Concentration: 800 ug/ml by Nanodrop and 400 ug/ml by Bradford method using BSA as the standard;

### Source:

Rabbit

### Isotype:

IgG

### Immunogen Catalog Number:

AG26538

### GenBank Accession Number:

BC016318

### GeneID (NCBI):

6237

### UNIPROT ID:

P10301

### Full Name:

related RAS viral (r-ras) oncogene homolog

### Calculated MW:

218 aa, 23 kDa

### Observed MW:

23 kDa

### Purification Method:

Antigen affinity purification

### Recommended Dilutions:

WB 1:1000-1:4000

IP 0.5-4.0 ug for 1.0-3.0 mg of total protein lysate

IHC 1:400-1:1600

## Applications

### Tested Applications:

WB, IP, IHC, ELISA

### Cited Applications:

WB, IHC

### Species Specificity:

human, mouse

### Cited Species:

human, mouse

**Note-IHC: suggested antigen retrieval with TE buffer pH 9.0; (\*) Alternatively, antigen retrieval may be performed with citrate buffer pH 6.0**

### Positive Controls:

WB : A549 cells, PC-3 cells, HT-29 cells

IP : HT-29 cells,

IHC : human renal cell carcinoma tissue, mouse kidney tissue, mouse colon tissue, human gliomas tissue

## Notable Publications

Author	Pubmed ID	Journal	Application
Yuanyuan Liu	34329919	Biomaterials	WB
Ruowen Xiao	35116799	Transl Cancer Res	WB
Chi-Sheng Wu	39842500	Cancer Lett	IHC

## Storage

### Storage:

Store at -20°C. Stable for one year after shipment.

### Storage Buffer:

PBS with 0.02% sodium azide and 50% glycerol pH 7.3.

Aliquoting is unnecessary for -20°C storage

\*\*\* 20ul sizes contain 0.1% BSA

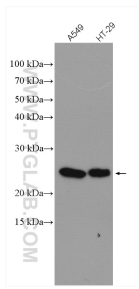
For technical support and original validation data for this product please contact:

T: 1 (888) 4PTGLAB (1-888-478-4522) (toll free in USA), or 1(312) 455-8498 (outside USA)

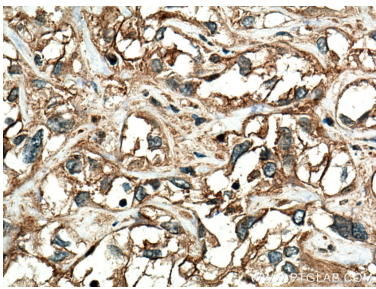
E: [proteintech@ptglab.com](mailto:proteintech@ptglab.com)  
W: [ptglab.com](http://ptglab.com)

This product is exclusively available under Proteintech Group brand and is not available to purchase from any other manufacturer.

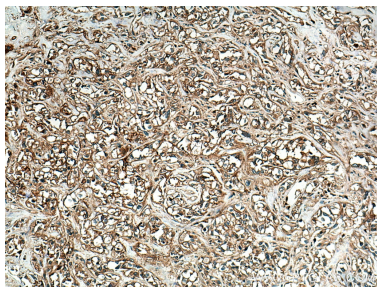
Selected Validation Data



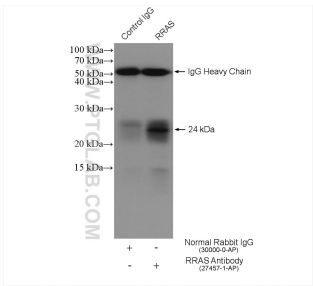
Various lysates were subjected to SDS PAGE followed by western blot with 27457-1-AP (RRAS antibody) at dilution of 1:2000 incubated at room temperature for 1.5 hours.



Immunohistochemical analysis of paraffin-embedded human renal cell carcinoma tissue slide using 27457-1-AP (RRAS antibody) at dilution of 1:800 (under 40x lens). Heat mediated antigen retrieval with Tris-EDTA buffer (pH 9.0).



Immunohistochemical analysis of paraffin-embedded human renal cell carcinoma tissue slide using 27457-1-AP (RRAS antibody) at dilution of 1:800 (under 10x lens). Heat mediated antigen retrieval with Tris-EDTA buffer (pH 9.0).



IP result of anti-RRAS (IP:27457-1-AP, 4ug; Detection:27457-1-AP 1:500) with HT-29 cells lysate 3320 ug.