

For Research Use Only

# ATG4A Polyclonal antibody

Catalog Number: 27467-1-AP

1 Publications



## Basic Information

### Catalog Number:

27467-1-AP

### Size:

150ul, Concentration: 400 ug/ml by Nanodrop and 267 ug/ml by Bradford method using BSA as the standard;

### Source:

Rabbit

### Isotype:

IgG

### Immunogen Catalog Number:

AG26497

### GenBank Accession Number:

BC061696

### GeneID (NCBI):

115201

### UNIPROT ID:

Q8WYNO

### Full Name:

ATG4 autophagy related 4 homolog A (S. cerevisiae)

### Calculated MW:

45 kDa

### Observed MW:

45 kDa

### Purification Method:

Antigen affinity purification

### Recommended Dilutions:

WB 1:500-1:1500

IHC 1:50-1:500

## Applications

### Tested Applications:

WB, IHC, ELISA

### Cited Applications:

WB

### Species Specificity:

human

### Cited Species:

human

### Positive Controls:

WB : LO2 cells, MKN-45 cells

IHC : human stomach cancer tissue,

**Note-IHC: suggested antigen retrieval with TE buffer pH 9.0; (\*) Alternatively, antigen retrieval may be performed with citrate buffer pH 6.0**

## Background Information

ATG4, a member of the cysteine protease family, plays an important role in autophagy induction. ATG4 enzymes cleave the C-terminal amino acid of ATG8 family proteins to reveal a C-terminal glycine that is essential for ATG8 proteins conjugation to phosphatidylethanolamine (PE) and insertion to membranes. ATG4A, which may be a target for cancer prevention and intervention, has been reported to be related to breast tumorigenesis, lung cancer, ovarian cancer, cervical cancer and gastric cancer. (PMID: 27276686, 29435029, 28636635)

## Notable Publications

Author	Pubmed ID	Journal	Application
Zhenhong Ni	31285423	Cell Death Dis	WB

## Storage

### Storage:

Store at -20°C. Stable for one year after shipment.

### Storage Buffer:

PBS with 0.02% sodium azide and 50% glycerol pH 7.3.

Aliquoting is unnecessary for -20°C storage

\*\*\* 20ul sizes contain 0.1% BSA

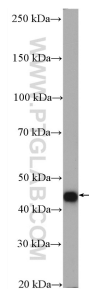
For technical support and original validation data for this product please contact:

T: 1 (888) 4PTGLAB (1-888-478-4522) (toll free in USA), or 1(312) 455-8498 (outside USA)

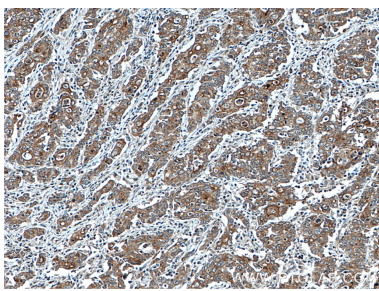
E: [proteintech@ptglab.com](mailto:proteintech@ptglab.com)  
W: [ptglab.com](http://ptglab.com)

This product is exclusively available under Proteintech Group brand and is not available to purchase from any other manufacturer.

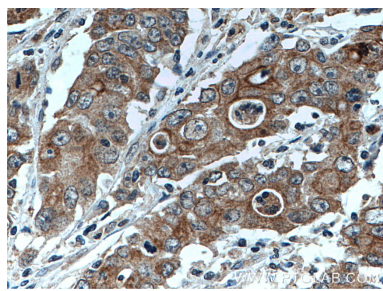
## Selected Validation Data



L02 cells were subjected to SDS PAGE followed by western blot with 27467-1-AP (ATG4A antibody) at dilution of 1:1500 incubated at room temperature for 1.5 hours.



Immunohistochemical analysis of paraffin-embedded human stomach cancer tissue slide using 27467-1-AP (ATG4A antibody) at dilution of 1:200 (under 10x lens. Heat mediated antigen retrieval with Tris-EDTA buffer (pH 9.0).



Immunohistochemical analysis of paraffin-embedded human stomach cancer tissue slide using 27467-1-AP (ATG4A antibody) at dilution of 1:200 (under 40x lens. Heat mediated antigen retrieval with Tris-EDTA buffer (pH 9.0).