

For Research Use Only

KIFC2 Polyclonal antibody

Catalog Number: 27470-1-AP



Basic Information

Catalog Number:

27470-1-AP

Size:

150ul , Concentration: 500 ug/ml by Nanodrop;

Source:

Rabbit

Isotype:

IgG

Immunogen Catalog Number:

AG26519

GenBank Accession Number:

BC017311

GeneID (NCBI):

90990

UNIPROT ID:

Q96AC6

Full Name:

kinesin family member C2

Calculated MW:

90 kDa

Observed MW:

96 kDa

Purification Method:

Antigen affinity purification

Recommended Dilutions:

WB 1:1000-1:4000

IF/ICC 1:50-1:500

Applications

Tested Applications:

WB, IF/ICC, ELISA

Species Specificity:

human, mouse, rat

Positive Controls:

WB : mouse brain tissue, rat brain tissue

IF/ICC : A431 cells,

Background Information

Kinesin family member C2 (KIFC2), one of the kinesin-14 motor family members, is especially expressed in neurons and is important for organizing dendritic microtubules and to control dendrite development (PMID: 37716704). KIFC2 is a microtubule-binding protein that functions as a motor protein in vesicle transport along axons and/or dendrites. Western blot analysis detected KIFC2 at an apparent molecular mass of 96 kD (PMID: 9115737).

Storage

Storage:

Store at -20°C. Stable for one year after shipment.

Storage Buffer:

PBS with 0.02% sodium azide and 50% glycerol, pH7.3

Aliquoting is unnecessary for -20°C storage

*** 20ul sizes contain 0.1% BSA

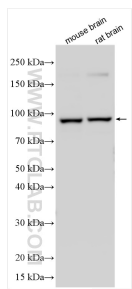
For technical support and original validation data for this product please contact:

T: 1 (888) 4PTGLAB (1-888-478-4522) (toll free in USA), or 1(312) 455-8498 (outside USA)

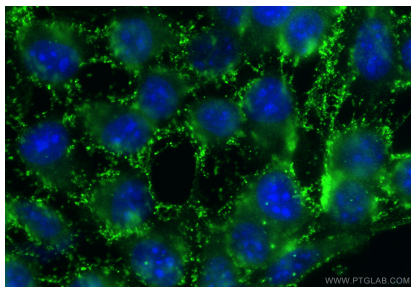
E: proteintech@ptglab.com
W: ptglab.com

This product is exclusively available under Proteintech Group brand and is not available to purchase from any other manufacturer.

Selected Validation Data



mouse brain tissue were subjected to SDS PAGE followed by western blot with 27470-1-AP (KIFC2 antibody) at dilution of 1:2000 incubated at room temperature for 1.5 hours.



Immunofluorescent analysis of (-20°C Methanol) fixed A431 cells using KIFC2 antibody (27470-1-AP) at dilution of 1:200 and CoraLite® 488-Conjugated Goat Anti-Rabbit IgG(H+L) (SA00013-2).