

For Research Use Only

KLHL25 Polyclonal antibody

Catalog Number: 27482-1-AP



Basic Information

Catalog Number: 27482-1-AP	GenBank Accession Number: BC028100	Purification Method: Antigen affinity purification
Size: 150ul , Concentration: 290 ug/ml by Nanodrop;	GeneID (NCBI): 64410	Recommended Dilutions: WB 1:500-1:1000
Source: Rabbit	UNIPROT ID: Q9H0H3	IHC 1:50-1:500
Isotype: IgG	Full Name: kelch-like 25 (Drosophila)	IF/ICC 1:50-1:500
Immunogen Catalog Number: AG25765	Observed MW: 66 kDa	

Applications

Tested Applications: WB, IHC, IF/ICC, ELISA	Positive Controls:
Species Specificity: human, mouse	WB : A549 cells,
Note-IHC: suggested antigen retrieval with TE buffer pH 9.0; (*) Alternatively, antigen retrieval may be performed with citrate buffer pH 6.0	IHC : mouse brain tissue,
	IF/ICC : A549 cells,

Storage

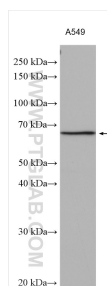
Storage:
Store at -20°C. Stable for one year after shipment.
Storage Buffer:
PBS with 0.02% sodium azide and 50% glycerol pH 7.3.
Aliquoting is unnecessary for -20°C storage

*** 20ul sizes contain 0.1% BSA

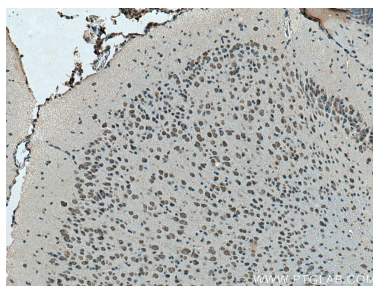
For technical support and original validation data for this product please contact:
T: 1 (888) 4PTGLAB (1-888-478-4522) (toll free in USA), or 1(312) 455-8498 (outside USA)
E: proteintech@ptglab.com
W: ptglab.com

This product is exclusively available under Proteintech Group brand and is not available to purchase from any other manufacturer.

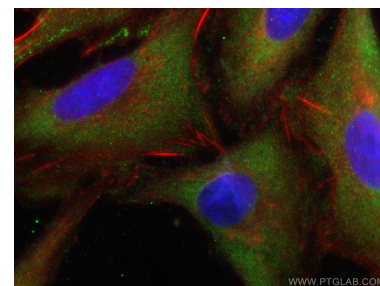
Selected Validation Data



A549 cells were subjected to SDS PAGE followed by western blot with 27482-1-AP (KLHL25 antibody) at dilution of 1:600 incubated at room temperature for 1.5 hours.



Immunohistochemical analysis of paraffin-embedded mouse brain tissue slide using 27482-1-AP (KLHL25 antibody) at dilution of 1:200 (under 10x lens). Heat mediated antigen retrieval with Tris-EDTA buffer (pH 9.0).



Immunofluorescent analysis of (-20°C Ethanol) fixed A549 cells using KLHL25 antibody (27482-1-AP) at dilution of 1:200 and CoraLite®488-Conjugated AffiniPure Goat Anti-Rabbit IgG(H+L), CL594-Phalloidin (red).