

For Research Use Only

# MRPL4 Polyclonal antibody

Catalog Number: 27484-1-AP

Featured Product

5 Publications



## Basic Information

### Catalog Number:

27484-1-AP

### Size:

150ul, Concentration: 267 ug/ml by Nanodrop and 267 ug/ml by Bradford method using BSA as the standard;

### Source:

Rabbit

### Isotype:

IgG

### Immunogen Catalog Number:

AG26568

### GenBank Accession Number:

BC000756

### GeneID (NCBI):

51073

### UNIPROT ID:

Q9BYD3

### Full Name:

mitochondrial ribosomal protein L4

### Calculated MW:

35 kDa

### Observed MW:

36 kDa

### Purification Method:

Antigen affinity purification

### Recommended Dilutions:

WB 1:10000-1:40000

IHC 1:50-1:500

IF/ICC 1:200-1:800

## Applications

### Tested Applications:

WB, IHC, IF/ICC, ELISA

### Cited Applications:

WB, IHC

### Species Specificity:

human

### Cited Species:

human

### Positive Controls:

WB : HL-60 cells,

IHC : human liver tissue,

IF/ICC : HepG2 cells,

**Note-IHC: suggested antigen retrieval with TE buffer pH 9.0; (\*) Alternatively, antigen retrieval may be performed with citrate buffer pH 6.0**

## Notable Publications

Author	Pubmed ID	Journal	Application
Elizabeth A Perry	33462515	Nat Metab	WB
Damien Jeandard	36537202	Nucleic Acids Res	WB
Xu Wang	39557952	Sci Rep	IHC

## Storage

### Storage:

Store at -20°C. Stable for one year after shipment.

### Storage Buffer:

PBS with 0.02% sodium azide and 50% glycerol pH 7.3.

Aliquoting is unnecessary for -20°C storage

\*\*\* 20ul sizes contain 0.1% BSA

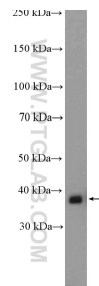
For technical support and original validation data for this product please contact:

T: 1 (888) 4PTGLAB (1-888-478-4522) (toll free in USA), or 1(312) 455-8498 (outside USA)

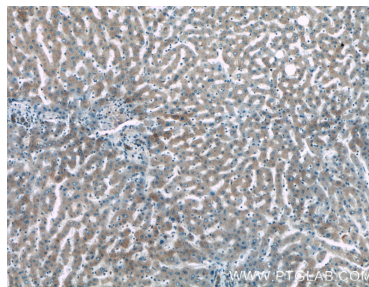
E: [proteintech@ptglab.com](mailto:proteintech@ptglab.com)  
W: [ptglab.com](http://ptglab.com)

This product is exclusively available under Proteintech Group brand and is not available to purchase from any other manufacturer.

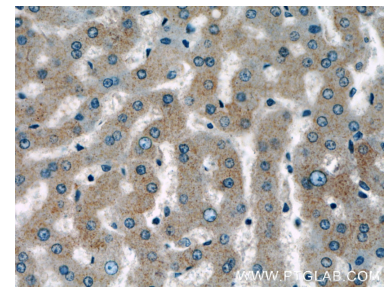
## Selected Validation Data



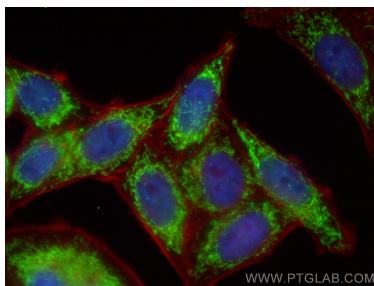
HL-60 cells were subjected to SDS PAGE followed by western blot with 27484-1-AP (MRPL4 antibody) at dilution of 1:20000 incubated at room temperature for 1.5 hours.



Immunohistochemical analysis of paraffin-embedded human liver tissue slide using 27484-1-AP (MRPL4 antibody) at dilution of 1:200 (under 10x lens).



Immunohistochemical analysis of paraffin-embedded human liver tissue slide using 27484-1-AP (MRPL4 antibody) at dilution of 1:200 (under 40x lens).



Immunofluorescent analysis of (4% PFA) fixed HepG2 cells using MRPL4 antibody (27484-1-AP) at dilution of 1:400 and Coralite® 488-Conjugated Goat Anti-Rabbit IgG(H+L) (SA00013-2), CL594-Phalloidin (red).