

For Research Use Only

Reticulocalbin 3 Polyclonal antibody

Catalog Number: 27497-1-AP



Basic Information

Catalog Number:

27497-1-AP

Size:

150ul , Concentration: 400 ug/ml by Nanodrop and 267 ug/ml by Bradford method using BSA as the standard;

Source:

Rabbit

Isotype:

IgG

Immunogen Catalog Number:

AG26569

GenBank Accession Number:

BC013436

GeneID (NCBI):

57333

UNIPROT ID:

Q96D15

Full Name:

reticulocalbin 3, EF-hand calcium binding domain

Calculated MW:

37 kDa

Observed MW:

45 kDa

Purification Method:

Antigen affinity purification

Recommended Dilutions:

WB 1:500-1:2000

Applications

Tested Applications:

WB, ELISA

Species Specificity:

Human

Positive Controls:

WB : HeLa cells, U2OS cells, K-562 cells

Storage

Storage:

Store at -20°C. Stable for one year after shipment.

Storage Buffer:

PBS with 0.02% sodium azide and 50% glycerol pH 7.3.

Aliquoting is unnecessary for -20°C storage

*** 20ul sizes contain 0.1% BSA

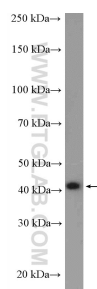
For technical support and original validation data for this product please contact:

T: 1 (888) 4PTGLAB (1-888-478-4522) (toll free in USA), or 1(312) 455-8498 (outside USA)

E: proteintech@ptglab.com
W: ptglab.com

This product is exclusively available under Proteintech Group brand and is not available to purchase from any other manufacturer.

Selected Validation Data



HeLa cells were subjected to SDS PAGE followed by western blot with 27497-1-AP (Reticulocalbin 3 antibody) at dilution of 1:1000 incubated at room temperature for 1.5 hours.