

For Research Use Only

CLUL1 Polyclonal antibody

Catalog Number: 27498-1-AP



Basic Information

Catalog Number: 27498-1-AP	GenBank Accession Number: BC025381	Purification Method: Antigen affinity purification
Size: 150ul , Concentration: 300 ug/ml by Nanodrop;	GeneID (NCBI): 27098	Recommended Dilutions: WB 1:500-1:1000
Source: Rabbit	UNIPROT ID: Q15846	
Isotype: IgG	Full Name: clusterin-like 1 (retinal)	
Immunogen Catalog Number: AG26570	Calculated MW: 54 kDa	
	Observed MW: 70 kDa	

Applications

Tested Applications: WB, ELISA	Positive Controls: WB : ARPE-19 cells,
Species Specificity: human	

Background Information

Clusterin-like protein 1 (CLUL1) functions as a molecular chaperone, protecting stressed proteins, and is upregulated in various neurodegenerative conditions, suggesting a role in defense against neuronal damage (PMID: 17148042). It is specifically expressed in cone photoreceptor cells and is regulated by the cone-rod homeobox (CRX) (PMID: 14507903). Mutations of CLUL1 were investigated in the context of age-related macular degeneration (AMD), a leading cause of blindness in the elderly (PMID: 17148042).

Storage

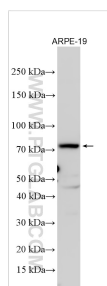
Storage:
Store at -20°C. Stable for one year after shipment.
Storage Buffer:
PBS with 0.02% sodium azide and 50% glycerol pH 7.3.
Aliquoting is unnecessary for -20°C storage

*** 20ul sizes contain 0.1% BSA

For technical support and original validation data for this product please contact:
T: 1 (888) 4PTGLAB (1-888-478-4522) (toll free in USA), or 1(312) 455-8498 (outside USA)
E: proteintech@ptglab.com
W: ptglab.com

This product is exclusively available under Proteintech Group brand and is not available to purchase from any other manufacturer.

Selected Validation Data



Various lysates were subjected to SDS PAGE followed by western blot with 27498-1-AP (CLUL1 antibody) at dilution of 1:600 incubated at room temperature for 1.5 hours.