

For Research Use Only

CLUL1 Polyclonal antibody, PBS Only

Catalog Number: 27498-1-PBS



Basic Information

Catalog Number: 27498-1-PBS	GenBank Accession Number: BC025381	Purification Method: Antigen affinity purification
Size: 100ug , Concentration: 1 mg/ml by Nanodrop;	GeneID (NCBI): 27098	
Source: Rabbit	UNIPROT ID: Q15846	
Isotype: IgG	Full Name: clusterin-like 1 (retinal)	
Immunogen Catalog Number: AG26570	Calculated MW: 54 kDa	
	Observed MW: 70 kDa	

Applications

Tested Applications:
WB, Indirect ELISA

Species Specificity:
human

Background Information

Clusterin-like protein 1 (CLUL1) functions as a molecular chaperone, protecting stressed proteins, and is upregulated in various neurodegenerative conditions, suggesting a role in defense against neuronal damage (PMID: 17148042). It is specifically expressed in cone photoreceptor cells and is regulated by the cone-rod homeobox (CRX) (PMID: 14507903). Mutations of CLUL1 were investigated in the context of age-related macular degeneration (AMD), a leading cause of blindness in the elderly (PMID: 17148042).

Storage

Storage:
Store at -80°C.
Storage Buffer:
PBS Only

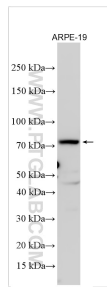
For technical support and original validation data for this product please contact:

T: 1 (888) 4PTGLAB (1-888-478-4522) (toll free
in USA), or 1(312) 455-8498 (outside USA)

E: proteintech@ptglab.com
W: ptglab.com

This product is exclusively available under Proteintech Group brand and is not available to purchase from any other manufacturer.

Selected Validation Data



Various lysates were subjected to SDS PAGE followed by western blot with 27498-1-AP (CLUL1 antibody) at dilution of 1:600 incubated at room temperature for 1.5 hours. This data was developed using the same antibody clone with 27498-1-PBS in a different storage buffer formulation.