

For Research Use Only

JAB1 Polyclonal antibody

Catalog Number: 27511-1-AP **5 Publications**



Basic Information

Catalog Number: 27511-1-AP	GenBank Accession Number: BC001187	Purification Method: Antigen affinity purification
Size: 150ul, Concentration: 350 µg/ml by Nanodrop and 267 µg/ml by Bradford method using BSA as the standard;	GeneID (NCBI): 10987	Recommended Dilutions: WB 1:500-1:4000 IHC 1:250-1:1000 IF 1:200-1:800
Source: Rabbit	Full Name: COP9 constitutive photomorphogenic homolog subunit 5 (Arabidopsis)	
Isotype: IgG	Calculated MW: 37 kDa	
Immunogen Catalog Number: AG25950	Observed MW: 35-38 kDa	

Applications

Tested Applications:
FC, IF, IHC, WB, ELISA

Cited Applications:
IF, IHC, WB

Species Specificity:
Human, mouse, rat

Cited Species:
human, mouse

Note-IHC: suggested antigen retrieval with TE buffer pH 9.0; (*) Alternatively, antigen retrieval may be performed with citrate buffer pH 6.0

Positive Controls:

WB: HEK-293 cells, HeLa cells, NIH/3T3 cells, PC-12 cells

IHC: mouse liver tissue, rat liver tissue

IF: HeLa cells,

Background Information

Notable Publications

Author	Pubmed ID	Journal	Application
Huilin Zhang	34247597	Cancer Cell Int	WB
Xin Yin	34993131	Front Oncol	WB
Ping Zhu	35971127	Cell Commun Signal	WB,IHC,IF

Storage

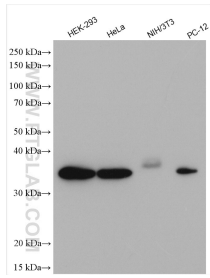
Storage:
Store at -20°C. Stable for one year after shipment.
Storage Buffer:
PBS with 0.02% sodium azide and 50% glycerol pH 7.3.
Aliquoting is unnecessary for -20°C storage

*** 20ul sizes contain 0.1% BSA

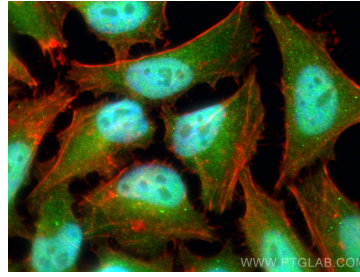
For technical support and original validation data for this product please contact:
T: 1 (888) 4PTGLAB (1-888-478-4522) (toll free in USA), or 1(312) 455-8498 (outside USA)
E: proteintech@ptglab.com
W: ptglab.com

This product is exclusively available under Proteintech Group brand and is not available to purchase from any other manufacturer.

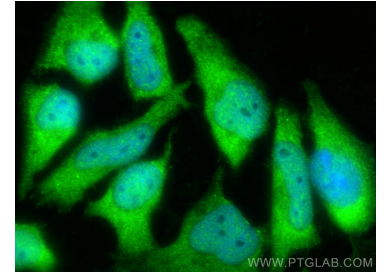
Selected Validation Data



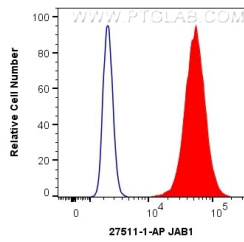
Various lysates were subjected to SDS PAGE followed by western blot with 27511-1-AP (JAB1 antibody) at dilution of 1:3000 incubated at room temperature for 1.5 hours.



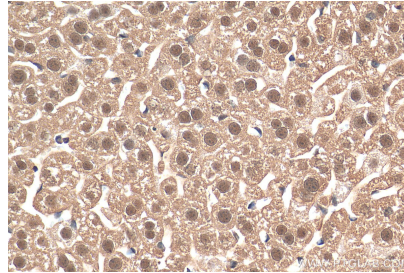
Immunofluorescent analysis of (4% PFA) fixed HeLa cells using JAB1 antibody (27511-1-AP) at dilution of 1:400 and Coralite@488-Conjugated AffiniPure Goat Anti-Rabbit IgG(H+L), CL594-Phalloidin (red).



Immunofluorescent analysis of (-20°C Methanol) fixed HeLa cells using JAB1 antibody (27511-1-AP) at dilution of 1:400 and Coralite@488-Conjugated AffiniPure Goat Anti-Rabbit IgG(H+L).



1X10⁶ HEK-293 cells were intracellularly stained with 0.4 ug Anti-Human JAB1 (27511-1-AP) and Coralite@488-Conjugated AffiniPure Goat Anti-Rabbit IgG(H+L) at dilution 1:1000 (red), or 0.4 ug Isotype Control. Cells were fixed with 4% PFA and permeabilized with Flow Cytometry Perm Buffer (PF00011-C).



Immunohistochemical analysis of paraffin-embedded mouse liver tissue slide using 27511-1-AP (JAB1 antibody) at dilution of 1:500 (under 40x lens). Heat mediated antigen retrieval with Tris-EDTA buffer (pH 9.0).