

For Research Use Only

Supervillin Polyclonal antibody

Catalog Number: 27524-1-AP



Basic Information

Catalog Number: 27524-1-AP	GenBank Accession Number: NM_003174	Purification Method: Antigen affinity purification
Size: 150ul , Concentration: 400 ug/ml by Nanodrop;	GeneID (NCBI): 6840	Recommended Dilutions: WB 1:500-1:1000
Source: Rabbit	UNIPROT ID: O95425	
Isotype: IgG	Full Name: supervillin	
Immunogen Catalog Number: AG26196	Calculated MW: 248 kDa	
	Observed MW: 205 kDa	

Applications

Tested Applications: WB, ELISA	Positive Controls: WB : A431 cells, HepG2 cells
Species Specificity: human	

Background Information

Supervillin (SVIL) belongs to the villin/gelsolin superfamily of actin-binding proteins involved in many cellular processes. A non-muscle-specific form of Supervillin activates androgen receptor activity. Supervillin another isoform, called Archvillin, is expressed in skeletal and cardiac muscle tissue where it plays a role in both muscle fiber structure and signaling. Mutations in Supervillin are associated with myofibrillar Myopathy10 (MFM10), which causes myopathy with myofibrillar disorganization and autophagic vacuoles (PMID: 9867483, 32779703).

Storage

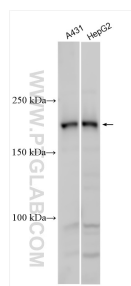
Storage:
Store at -20°C. Stable for one year after shipment.
Storage Buffer:
PBS with 0.02% sodium azide and 50% glycerol pH 7.3.
Aliquoting is unnecessary for -20°C storage

*** 20ul sizes contain 0.1% BSA

For technical support and original validation data for this product please contact:
T: 1 (888) 4PTGLAB (1-888-478-4522) (toll free in USA), or 1(312) 455-8498 (outside USA)
E: proteintech@ptglab.com
W: ptglab.com

This product is exclusively available under Proteintech Group brand and is not available to purchase from any other manufacturer.

Selected Validation Data



Various lysates were subjected to SDS PAGE followed by western blot with 27524-1-AP (Supervillin antibody) at dilution of 1:600 incubated at room temperature for 1.5 hours.