

For Research Use Only

BEX4 Polyclonal antibody

Catalog Number: 27525-1-AP

Featured Product



Basic Information

Catalog Number:

27525-1-AP

Size:

150ul, Concentration: 350 ug/ml by Nanodrop;

Source:

Rabbit

Isotype:

IgG

Immunogen Catalog Number:

AG26207

GenBank Accession Number:

BC015794

GeneID (NCBI):

56271

UNIPROT ID:

Q9NWD9

Full Name:

brain expressed, X-linked 4

Calculated MW:

120 aa, 14 kDa

Observed MW:

18-20 kDa

Purification Method:

Antigen affinity purification

Recommended Dilutions:

WB 1:500-1:2000

Applications

Tested Applications:

WB, ELISA

Species Specificity:

human

Positive Controls:

WB : HL-60 cells, K-562 cells

Background Information

BEX4, also known as BEXL1 and NADE3, which belongs to the BEX family. The brain-expressed X-linked (BEX) family consists of five member genes (from 1 to 5) that are commonly located on the X chromosome. The molecular weight of BEXs is approximately 15 kDa, but little is known about their structural characteristics and molecular functions (PMID: 34576008).

Storage

Storage:

Store at -20°C. Stable for one year after shipment.

Storage Buffer:

PBS with 0.02% sodium azide and 50% glycerol pH 7.3.

Aliquoting is unnecessary for -20°C storage

*** 20ul sizes contain 0.1% BSA

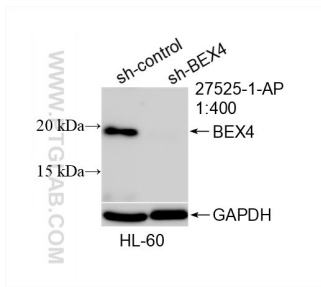
For technical support and original validation data for this product please contact:

T: 1 (888) 4PTGLAB (1-888-478-4522) (toll free in USA), or 1(312) 455-8498 (outside USA)

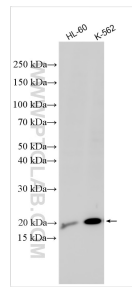
E: proteintech@ptglab.com
W: ptglab.com

This product is exclusively available under Proteintech Group brand and is not available to purchase from any other manufacturer.

Selected Validation Data



WB result of BEX4 antibody (27525-1-AP; 1:400; incubated at room temperature for 1.5 hours) with sh-Control and sh-BEX4 transfected HL-60 cells.



Various lysates were subjected to SDS PAGE followed by western blot with 27525-1-AP (BEX4 antibody) at dilution of 1:1000 incubated at room temperature for 1.5 hours.