

For Research Use Only

# ADAM32 Polyclonal antibody, PBS Only

Catalog Number: 27530-1-PBS



## Basic Information

<b>Catalog Number:</b> 27530-1-PBS	<b>GenBank Accession Number:</b> BC026169	<b>Purification Method:</b> Antigen affinity purification
<b>Size:</b> 100ug, Concentration: 1 mg/ml by Nanodrop;	<b>GeneID (NCBI):</b> 203102	
<b>Source:</b> Rabbit	<b>UNIPROT ID:</b> Q8TC27	
<b>Isotype:</b> IgG	<b>Full Name:</b> ADAM metalloprotease domain 32	
<b>Immunogen Catalog Number:</b> AG26450	<b>Calculated MW:</b> 787 aa, 88 kDa	
	<b>Observed MW:</b> 80 kDa	

## Applications

**Tested Applications:**  
WB, Indirect ELISA

**Species Specificity:**  
human, mouse, rat

## Background Information

ADAM32 may play a role in sperm development and fertilization and it is a non-catalytic metalloprotease-like protein. In mature sperm from cauda epididymis and vas deferens, a band of 44 kDa for ADAM32 is detected and indicates that ADAM32 is made as precursors and processed to lower molecular-weight forms during sperm maturation in the epididymis (PMID:16407499). The full length protein has a signal peptide, a propeptide and 4 glycosylation sites.

## Storage

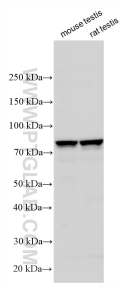
**Storage:**  
Store at -80°C.

**Storage Buffer:**  
PBS only, pH7.3

For technical support and original validation data for this product please contact:  
T: 1 (888) 4PTGLAB (1-888-478-4522) (toll free in USA), or 1(312) 455-8498 (outside USA)      E: proteintech@ptglab.com  
W: ptglab.com

**This product is exclusively available under Proteintech Group brand and is not available to purchase from any other manufacturer.**

## Selected Validation Data



Various lysates were subjected to SDS PAGE followed by western blot with 27530-1-AP (ADAM32 antibody) at dilution of 1:600 incubated at room temperature for 1.5 hours. This data was developed using the same antibody clone with 27530-1-PBS in a different storage buffer formulation.