

For Research Use Only

CTSS Polyclonal antibody

Catalog Number: 27538-1-AP



Basic Information

Catalog Number: 27538-1-AP	GenBank Accession Number: BC002642	Purification Method: Antigen affinity purification
Size: 150ul , Concentration: 130 ug/ml by Nanodrop;	GeneID (NCBI): 1520	Recommended Dilutions: WB 1:1000-1:4000
Source: Rabbit	UNIPROT ID: P25774	IHC 1:50-1:500
Isotype: IgG	Full Name: cathepsin S	IF/ICC 1:200-1:800
Immunogen Catalog Number: AG25881	Calculated MW: 37 kDa	
	Observed MW: 25 kDa, 37 kDa	

Applications

Tested Applications: WB, IHC, IF/ICC, ELISA	Positive Controls:
Species Specificity: human	WB : HUVEC cells, THP-1 cells, U-87 MG cells
Note-IHC: suggested antigen retrieval with TE buffer pH 9.0; (*) Alternatively, antigen retrieval may be performed with citrate buffer pH 6.0	IHC : human colon cancer tissue,
	IF/ICC : U-87 MG cells,

Background Information

Cathepsin S (CTSS) is a cysteine protease that plays an important role in extracellular matrix degradation and remodeling, antigen presentation, inflammation, and angiogenesis; it has been identified as a radiation response gene. In malignant tumors, CTSS induces tumor proliferation, invasion and metastasis through various mechanisms. CTSS proteins could be detected in two forms, pro-CTSS (35-37 kDa) and active CTSS (25 kDa) (PMID: 30006610, PMID: 34208434). And in this publication, it was also reported that active CTSS was expressed at higher levels than pro-CTSS in the lysate (PMID: 34208434).

Storage

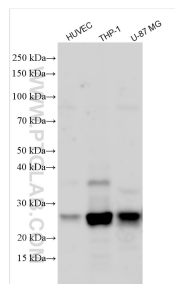
Storage:
Store at -20°C. Stable for one year after shipment.
Storage Buffer:
PBS with 0.02% sodium azide and 50% glycerol pH 7.3.
Aliquoting is unnecessary for -20°C storage

*** 20ul sizes contain 0.1% BSA

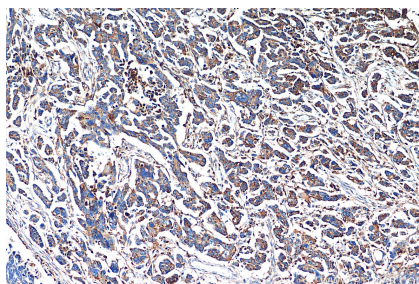
For technical support and original validation data for this product please contact:
T: 1 (888) 4PTGLAB (1-888-478-4522) (toll free in USA), or 1(312) 455-8498 (outside USA)
E: proteintech@ptglab.com
W: ptglab.com

This product is exclusively available under Proteintech Group brand and is not available to purchase from any other manufacturer.

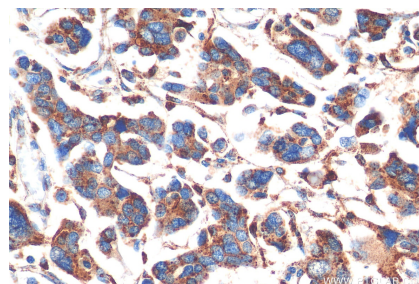
Selected Validation Data



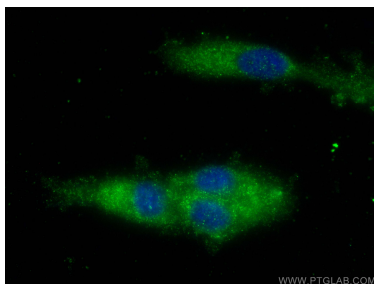
Various lysates were subjected to SDS PAGE followed by western blot with 27538-1-AP (CTSS antibody) at dilution of 1:2000 incubated at room temperature for 1.5 hours.



Immunohistochemical analysis of paraffin-embedded human colon cancer tissue slide using 27538-1-AP (CTSS antibody) at dilution of 1:200 (under 10x lens). Heat mediated antigen retrieval with Tris-EDTA buffer (pH 9.0).



Immunohistochemical analysis of paraffin-embedded human colon cancer tissue slide using 27538-1-AP (CTSS antibody) at dilution of 1:200 (under 40x lens). Heat mediated antigen retrieval with Tris-EDTA buffer (pH 9.0).



Immunofluorescent analysis of (-20°C Ethanol) fixed U-87 MG cells using CTSS antibody (27538-1-AP) at dilution of 1:400 and CoraLite®488-Conjugated Goat Anti-Rabbit IgG(H+L).