

For Research Use Only

EMC7/C15orf24 Polyclonal antibody

Catalog Number: 27550-1-AP

3 Publications



Basic Information

Catalog Number:

27550-1-AP

Size:

150ul, Concentration: 650 ug/ml by Nanodrop and 333 ug/ml by Bradford method using BSA as the standard;

Source:

Rabbit

Isotype:

IgG

Immunogen Catalog Number:

AG26784

GenBank Accession Number:

BC104934

GeneID (NCBI):

56851

UNIPROT ID:

Q9NPA0

Full Name:

chromosome 15 open reading frame 24

Observed MW:

20-26 kDa

Purification Method:

Antigen affinity purification

Recommended Dilutions:

WB 1:1000-1:6000

IHC 1:250-1:1000

Applications

Tested Applications:

WB, IHC, ELISA

Cited Applications:

WB

Species Specificity:

human

Cited Species:

human

Note-IHC: suggested antigen retrieval with TE buffer pH 9.0; (*) Alternatively, antigen retrieval may be performed with citrate buffer pH 6.0

Positive Controls:

WB : HeLa cells, HepG2 cells

IHC : human intrahepatic cholangiocarcinoma tissue, human ovary cancer tissue

Background Information

The mammalian ER membrane complex (EMC) is composed of 10 subunits, EMC 1-10. Endoplasmic reticulum membrane protein complex subunit 7 (EMC7, also named C15orf24) is part of the endoplasmic reticulum membrane protein complex (EMC) that enables the energy-independent insertion into endoplasmic reticulum membranes of newly synthesized membrane proteins.

Notable Publications

Author	Pubmed ID	Journal	Application
John P O'Donnell	32459176	Elife	WB
Katharine R Page	38076791	bioRxiv	WB
Tino Pleiner	37199759	J Cell Biol	WB

Storage

Storage:

Store at -20°C. Stable for one year after shipment.

Storage Buffer:

PBS with 0.02% sodium azide and 50% glycerol pH 7.3.

Aliquoting is unnecessary for -20°C storage

*** 20ul sizes contain 0.1% BSA

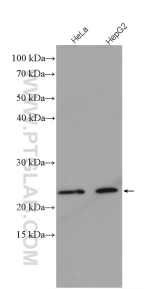
For technical support and original validation data for this product please contact:

T: 1 (888) 4PTGLAB (1-888-478-4522) (toll free in USA), or 1(312) 455-8498 (outside USA)

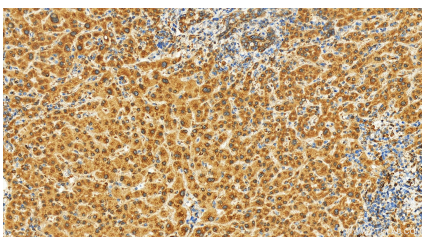
E: proteintech@ptglab.com
W: ptglab.com

This product is exclusively available under Proteintech Group brand and is not available to purchase from any other manufacturer.

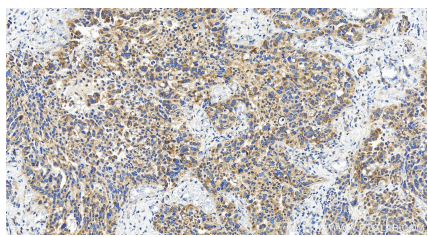
Selected Validation Data



Various lysates were subjected to SDS PAGE followed by western blot with 27550-1-AP (C15orf24 antibody) at dilution of 1:3000 incubated at room temperature for 1.5 hours.



Immunohistochemical analysis of paraffin-embedded human intrahepatic cholangiocarcinoma tissue slide using 27550-1-AP (EMC7/C15orf24 antibody) at dilution of 1:500 (under 20x lens). Heat mediated antigen retrieval with Tris-EDTA buffer (pH 9.0).



Immunohistochemical analysis of paraffin-embedded human ovary cancer tissue slide using 27550-1-AP (EMC7/C15orf24 antibody) at dilution of 1:500 (under 20x lens). Heat mediated antigen retrieval with Tris-EDTA buffer (pH 9.0).