

For Research Use Only

SCN2A Polyclonal antibody, PBS Only

Catalog Number: 27551-1-PBS



Basic Information

Catalog Number: 27551-1-PBS	GenBank Accession Number: NM_001040142	Purification Method: Antigen affinity purification
Size: 100ug, Concentration: 1 mg/ml by Nanodrop;	GeneID (NCBI): 6326	
Source: Rabbit	UNIPROT ID: Q99250	
Isotype: IgG	Full Name: sodium channel, voltage-gated, type II, alpha subunit	
Immunogen Catalog Number: AG26022	Calculated MW: 228 kDa	
	Observed MW: ~250 kDa	

Applications

Tested Applications:
WB, IF-P, Indirect ELISA

Species Specificity:
human, mouse

Background Information

The Sodium Channel, Voltage-Gated, Type II, Alpha (SCN2A) gene encodes the neuronal sodium channel NaV1.2. There are two major developmentally regulated splice isoforms of NaV1.2 that use mutually exclusive copies of the fifth coding exon and differ by one amino acid at position 209: Asparagine (Asn/N) vs. Aspartic acid (Asp/D). NaV1.2 is one of several sodium channels involved in initiation and propagation of action potentials in neurons. It's widely expressed throughout the human central nervous system, but not in peripheral tissues. (PMID: 29691040)

Storage

Storage:
Store at -80°C.

Storage Buffer:
PBS only, pH7.3

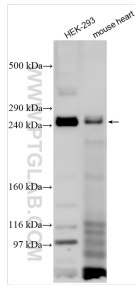
For technical support and original validation data for this product please contact:

T: 1 (888) 4PTGLAB (1-888-478-4522) (toll free in USA), or 1(312) 455-8498 (outside USA)

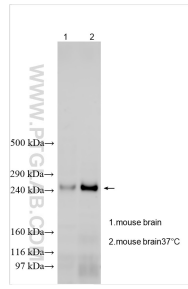
E: proteintech@ptglab.com
W: ptglab.com

This product is exclusively available under Proteintech Group brand and is not available to purchase from any other manufacturer.

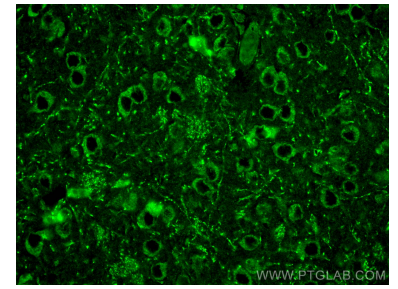
Selected Validation Data



Various lysates were subjected to SDS PAGE followed by western blot with 27551-1-AP (SCN2A antibody) at dilution of 1:1000 incubated at room temperature for 1.5 hours. This data was developed using the same antibody clone with 27551-1-PBS in a different storage buffer formulation.



Various lysates were subjected to SDS PAGE followed by western blot with 27551-1-AP (SCN2A antibody) at dilution of 1:600 incubated at room temperature for 1.5 hours. This data was developed using the same antibody clone with 27551-1-PBS in a different storage buffer formulation.



Immunofluorescent analysis of (4% PFA) fixed mouse brain tissue using SCN2A antibody (27551-1-AP) at dilution of 1:200 and CoraLite®488-Conjugated AffiniPure Goat Anti-Rabbit IgG(H+L). This data was developed using the same antibody clone with 27551-1-PBS in a different storage buffer formulation.