

For Research Use Only

SUN2 Polyclonal antibody, PBS Only

Catalog Number: 27556-1-PBS

Featured Product



Basic Information

Catalog Number:

27556-1-PBS

Size:

100ug, Concentration: 1 mg/ml by Nanodrop;

Source:

Rabbit

Isotype:

IgG

Immunogen Catalog Number:

AG16077

GenBank Accession Number:

BC111717

GeneID (NCBI):

25777

UNIPROT ID:

Q9UH99

Full Name:

unc-84 homolog B (C. elegans)

Calculated MW:

717 aa, 80 kDa

Observed MW:

80-85 kDa

Purification Method:

Antigen affinity purification

Applications

Tested Applications:

WB, IHC, IF/ICC, Indirect ELISA

Species Specificity:

human, mouse

Background Information

SUN2, also known as UNC84B, RAB5IP, belongs to the SUN (Sad1 and UNC84) protein family, which is a group of conserved proteins in eukaryotes. SUN2 is a key component of the LINC (Linker of Nucleoskeleton and Cytoskeleton) complex, which connects the nuclear lamina to the cytoskeleton. This connection is crucial for the transmission of mechanical forces across the nuclear envelope and for nuclear movement and positioning (PMID: 18396275).

Storage

Storage:

Store at -80°C.

Storage Buffer:

PBS Only

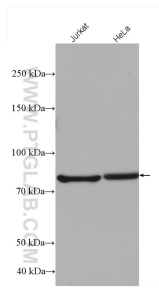
For technical support and original validation data for this product please contact:

T: 1 (888) 4PTGLAB (1-888-478-4522) (toll free in USA), or 1(312) 455-8498 (outside USA)

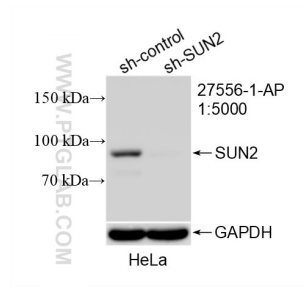
E: proteintech@ptglab.com
W: ptglab.com

This product is exclusively available under Proteintech Group brand and is not available to purchase from any other manufacturer.

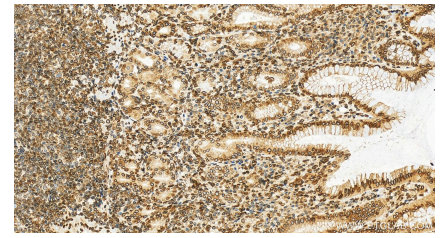
Selected Validation Data



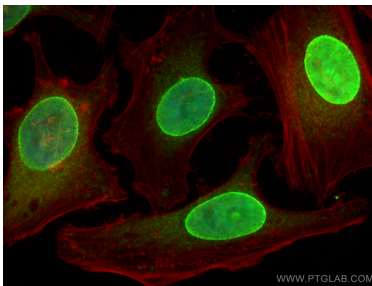
Various lysates were subjected to SDS PAGE followed by western blot with 27556-1-AP (SUN2 antibody) at dilution of 1:4000 incubated at room temperature for 1.5 hours. This data was developed using the same antibody clone with 27556-1-PBS in a different storage buffer formulation.



WB result of SUN2 antibody (27556-1-AP; 1:5000; incubated at room temperature for 1.5 hours) with sh-Control and sh-SUN2 transfected HeLa cells. This data was developed using the same antibody clone with 27556-1-PBS in a different storage buffer formulation.



Immunohistochemical analysis of paraffin-embedded human stomach tissue slide using 27556-1-AP (SUN2 antibody) at dilution of 1:1000 (under 20x lens). Heat mediated antigen retrieval with Tris-EDTA buffer (pH 9.0). This data was developed using the same antibody clone with 27556-1-PBS in a different storage buffer formulation.



Immunofluorescent analysis of (4% PFA) fixed HeLa cells using SUN2 antibody (27556-1-AP) at dilution of 1:400 and Coralite®488-Conjugated AffiniPure Goat Anti-Rabbit IgG(H+L), CL594-Phalloidin (red). This data was developed using the same antibody clone with 27556-1-PBS in a different storage buffer formulation.