

For Research Use Only

# C1GALT1 Polyclonal antibody, PBS Only

Catalog Number: 27569-1-PBS



## Basic Information

**Catalog Number:**

27569-1-PBS

**Size:**

100ug, Concentration: 1 mg/ml by Nanodrop;

**Source:**

Rabbit

**Isotype:**

IgG

**Immunogen Catalog Number:**

AG26144

**GenBank Accession Number:**

NM\_020156

**GeneID (NCBI):**

56913

**UNIPROT ID:**

Q9NS00

**Full Name:**

core 1 synthase, glycoprotein-N-acetylgalactosamine 3-beta-galactosyltransferase, 1

**Calculated MW:**

42 kDa

**Observed MW:**

42-45 kDa

**Purification Method:**

Antigen affinity purification

## Applications

**Tested Applications:**

WB, IF/ICC, Indirect ELISA

**Species Specificity:**

human

## Background Information

C1GALT1 (Glycoprotein-N-acetylgalactosamine 3-beta-galactosyltransferase 1), also known as B3Gal-T8, catalyzes the transfer of galactose (Gal) from UDP-Gal to N-acetylgalactosamine (GalNAc) O-linked esters of threonine and serine residues of target proteins, including IgA1, to form the T antigen (PMID: 28209808). C1GalT1 is overexpressed in many common cancers including colon, breast, gastric, lung, head and neck, pancreatic, esophageal, prostate, and hepatocellular cancer (PMID: 34944925). C1GALT1 protein contains 363 amino acids and is a type II transmembrane protein. Rate C1GalT1 is an 84/86kDa disulfide-bonded homodimer, but its active form is believed to be a 42/43 kDa monomeric protein (PMID: 34149900).

## Storage

**Storage:**

Store at -80°C.

**Storage Buffer:**

PBS only, pH7.3

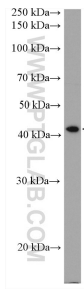
For technical support and original validation data for this product please contact:

T: 1 (888) 4PTGLAB (1-888-478-4522) (toll free in USA), or 1(312) 455-8498 (outside USA)

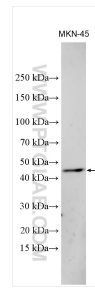
E: [proteintech@ptglab.com](mailto:proteintech@ptglab.com)  
W: [ptglab.com](http://ptglab.com)

**This product is exclusively available under Proteintech Group brand and is not available to purchase from any other manufacturer.**

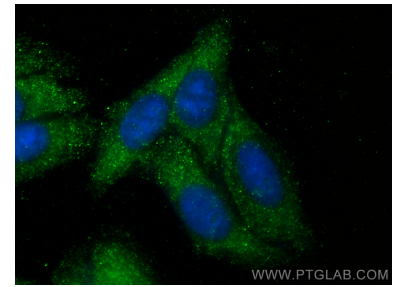
## Selected Validation Data



T-47D cells were subjected to SDS PAGE followed by western blot with 27569-1-AP (C1GALT1 antibody) at dilution of 1:600 incubated at room temperature for 1.5 hours. This data was developed using the same antibody clone with 27569-1-PBS in a different storage buffer formulation.



Various lysates were subjected to SDS PAGE followed by western blot with 27569-1-AP (C1GALT1 antibody) at dilution of 1:1000 incubated at room temperature for 1.5 hours. This data was developed using the same antibody clone with 27569-1-PBS in a different storage buffer formulation.



Immunofluorescent analysis of (-20°C Ethanol) fixed HepG2 cells using C1GALT1 antibody (27569-1-AP) at dilution of 1:200 and CoraLite®488-Conjugated Goat Anti-Rabbit IgG(H+L) (SA00013-2). This data was developed using the same antibody clone with 27569-1-PBS in a different storage buffer formulation.