

For Research Use Only

# GLUT5 Polyclonal antibody

Catalog Number: 27571-1-AP

Featured Product

9 Publications



## Basic Information

### Catalog Number:

27571-1-AP

### Size:

150ul, Concentration: 550 ug/ml by Nanodrop;

### Source:

Rabbit

### Isotype:

IgG

### Immunogen Catalog Number:

AG25682

### GenBank Accession Number:

BC001820

### GeneID (NCBI):

6518

### UNIPROT ID:

P22732

### Full Name:

solute carrier family 2 (facilitated glucose/fructose transporter), member 5

### Calculated MW:

55 kDa

### Observed MW:

48-70 kDa

### Purification Method:

Antigen affinity purification

### Recommended Dilutions:

WB 1:500-1:2000

IHC 1:50-1:500

## Applications

### Tested Applications:

WB, IHC, ELISA

### Cited Applications:

WB, IHC

### Species Specificity:

human, mouse, rat

### Cited Species:

human, mouse

### Positive Controls:

**WB**: Caco-2 cells, A549 cells, mouse kidney tissue, rat testis tissue

**IHC**: human breast cancer tissue, human lung cancer tissue

**Note-IHC: suggested antigen retrieval with TE buffer pH 9.0; (\*) Alternatively, antigen retrieval may be performed with citrate buffer pH 6.0**

## Background Information

GLUT5, also known as SLC2A5, is a fructose transporter expressed on the apical border of enterocytes in the small intestine. GLUT5 allows for fructose to be transported from the intestinal lumen into the enterocyte by facilitated diffusion due to fructose's high concentration in the intestinal lumen (PMID: 12750891). GLUT5 is also expressed in skeletal muscle, testis, kidney, fat tissue (adipocytes), and brain (PMID: 9781312, 18398011).

## Notable Publications

Author	Pubmed ID	Journal	Application
Yu Zhang	35777901	J Adv Res	WB
Kai Aoki	34065342	Nutrients	WB
Hu Hua	33598642	iScience	WB

## Storage

### Storage:

Store at -20°C. Stable for one year after shipment.

### Storage Buffer:

PBS with 0.02% sodium azide and 50% glycerol pH 7.3.

Aliquoting is unnecessary for -20°C storage

\*\*\* 20ul sizes contain 0.1% BSA

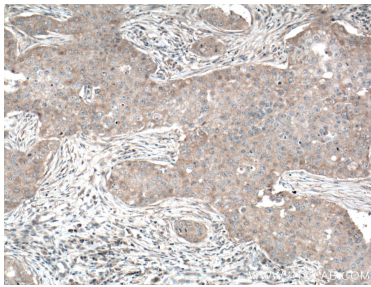
For technical support and original validation data for this product please contact:

T: 1 (888) 4PTGLAB (1-888-478-4522) (toll free in USA), or 1(312) 455-8498 (outside USA)

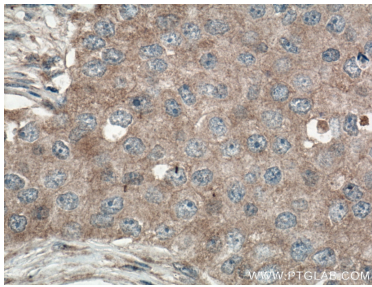
E: proteintech@ptglab.com  
W: ptglab.com

This product is exclusively available under Proteintech Group brand and is not available to purchase from any other manufacturer.

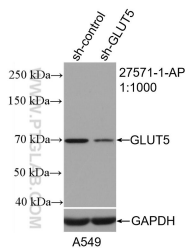
Selected Validation Data



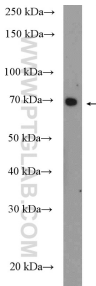
Immunohistochemical analysis of paraffin-embedded human breast cancer tissue slide using 27571-1-AP (GLUT5 antibody) at dilution of 1:200 (under 10x lens. Heat mediated antigen retrieval with Tris-EDTA buffer (pH 9.0).



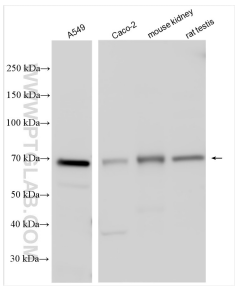
Immunohistochemical analysis of paraffin-embedded human breast cancer tissue slide using 27571-1-AP (GLUT5 antibody) at dilution of 1:200 (under 40x lens. Heat mediated antigen retrieval with Tris-EDTA buffer (pH 9.0).



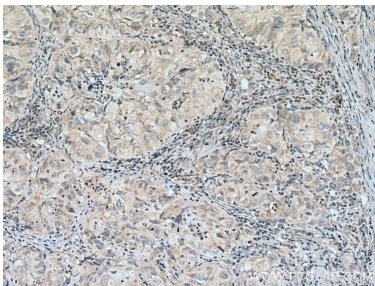
WB result of GLUT5 antibody (27571-1-AP; 1:1000; incubated at room temperature for 1.5 hours) with sh-Control and sh-GLUT5 transfected A549 cells.



Caco-2 cells were subjected to SDS PAGE followed by western blot with 27571-1-AP (GLUT5 antibody) at dilution of 1:1000 incubated at room temperature for 1.5 hours.



Various lysates were subjected to SDS PAGE followed by western blot with 27571-1-AP (GLUT5 antibody) at dilution of 1:800 incubated at room temperature for 1.5 hours.



Immunohistochemical analysis of paraffin-embedded human lung cancer tissue slide using 27571-1-AP (GLUT5 antibody) at dilution of 1:200 (under 10x lens). Heat mediated antigen retrieval with Tris-EDTA buffer (pH 9.0).