

For Research Use Only

MAP7D3 Polyclonal antibody

Catalog Number: 27573-1-AP



Basic Information

Catalog Number: 27573-1-AP	GenBank Accession Number: NM_001173516	Purification Method: Antigen affinity purification
Size: 150ul , Concentration: 360 ug/ml by Nanodrop;	GeneID (NCBI): 79649	Recommended Dilutions: WB: 1:500-1:3000
Source: Rabbit	UNIPROT ID: Q8IWC1	
Isotype: IgG	Full Name: MAP7 domain containing 3	
Immunogen Catalog Number: AG26082	Calculated MW: 98 kDa	
	Observed MW: 125-130 kDa	

Applications

Tested Applications: WB, ELISA	Positive Controls: WB : A549 cells, Calu-1 cells, HeLa cells, MDA-MB-468 cells, SH-SY5Y cells, SK-N-SH cells
Species Specificity: human	

Background Information

MAP7D3, also known as MDP3, features two coiled-coil regions near its N terminus, followed by a linker region, a MAP7-like domain, and a C-terminal domain. MAP7D3 is a microtubule-binding protein that regulates microtubule assembly and stability. MAP7D3 expression is cell cycle dependent, with lower expression in the G2 phase compared to its expression in the other phases of the cell cycle(PMID: 22142902).

Storage

Storage:
Store at -20°C. Stable for one year after shipment.
Storage Buffer:
PBS with 0.02% sodium azide and 50% glycerol, pH7.3
Aliquoting is unnecessary for -20°C storage

*** 20ul sizes contain 0.1% BSA

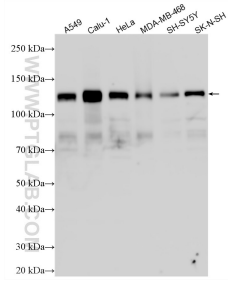
For technical support and original validation data for this product please contact:

T: 1 (888) 4PTGLAB (1-888-478-4522) (toll free in USA), or 1(312) 455-8498 (outside USA)

E: proteintech@ptglab.com
W: ptglab.com

This product is exclusively available under Proteintech Group brand and is not available to purchase from any other manufacturer.

Selected Validation Data



Various lysates were subjected to SDS PAGE followed by western blot with 27573-1-AP (MAP7D3 antibody) at dilution of 1:1500 incubated at room temperature for 1.5 hours.