

For Research Use Only

# MAP7D3 Polyclonal antibody, PBS Only

Catalog Number: 27573-1-PBS



## Basic Information

<b>Catalog Number:</b> 27573-1-PBS	<b>GenBank Accession Number:</b> NM_001173516	<b>Purification Method:</b> Antigen affinity purification
<b>Size:</b> 100ug, Concentration: 1 mg/ml by Nanodrop;	<b>GeneID (NCBI):</b> 79649	
<b>Source:</b> Rabbit	<b>UNIPROT ID:</b> Q8IWC1	
<b>Isotype:</b> IgG	<b>Full Name:</b> MAP7 domain containing 3	
<b>Immunogen Catalog Number:</b> AG26082	<b>Calculated MW:</b> 98 kDa	
	<b>Observed MW:</b> 125-130 kDa	

## Applications

**Tested Applications:**  
WB, Indirect ELISA

**Species Specificity:**  
human

## Background Information

MAP7D3, also known as MDP3, features two coiled-coil regions near its N terminus, followed by a linker region, a MAP7-like domain, and a C-terminal domain. MAP7D3 is a microtubule-binding protein that regulates microtubule assembly and stability. MAP7D3 expression is cell cycle dependent, with lower expression in the G2 phase compared to its expression in the other phases of the cell cycle (PMID: 22142902).

## Storage

**Storage:**  
Store at -80°C.

**Storage Buffer:**  
PBS only, pH7.3

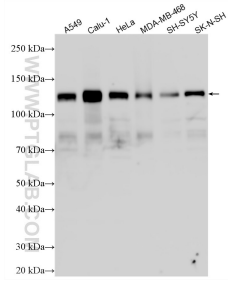
For technical support and original validation data for this product please contact:

T: 1 (888) 4PTGLAB (1-888-478-4522) (toll free in USA), or 1(312) 455-8498 (outside USA)

E: [proteintech@ptglab.com](mailto:proteintech@ptglab.com)  
W: [ptglab.com](http://ptglab.com)

**This product is exclusively available under Proteintech Group brand and is not available to purchase from any other manufacturer.**

## Selected Validation Data



Various lysates were subjected to SDS PAGE followed by western blot with 27573-1-AP (MAP7D3 antibody) at dilution of 1:1500 incubated at room temperature for 1.5 hours. This data was developed using the same antibody clone with 27573-1-PBS in a different storage buffer formulation.