

For Research Use Only

# SLC6A19 Polyclonal antibody

Catalog Number: 27575-1-AP



## Basic Information

<b>Catalog Number:</b> 27575-1-AP	<b>GenBank Accession Number:</b> BC148801	<b>Purification Method:</b> Antigen affinity purification
<b>Size:</b> 150ul , Concentration: 650 µg/ml by Nanodrop;	<b>GeneID (NCBI):</b> 340024	<b>Recommended Dilutions:</b> WB 1:500-1:1000
<b>Source:</b> Rabbit	<b>Full Name:</b> solute carrier family 6 (neutral amino acid transporter), member 19	
<b>Isotype:</b> IgG	<b>Calculated MW:</b> 634 aa, 71 kDa	
<b>Immunogen Catalog Number:</b> AG24362	<b>Observed MW:</b> 71 kDa	

## Applications

<b>Tested Applications:</b> WB, ELISA	<b>Positive Controls:</b> WB : Caco-2 cells, mouse kidney tissue, PC-3 cells, mouse small intestine tissue
<b>Species Specificity:</b> Human, mouse	

## Background Information

SLC6A19, also named as B0AT1, encodes system B(0) transmembrane protein that mediates epithelial resorption of neutral amino acids across the apical membrane in kidney and intestine (PubMed: 15044460). The protein contains 634 amino acids and has 12 predicted transmembrane regions with highly expression in human kidney and small intestine and minimal in pancreas (PubMed: 15286787). The expression of SLC6A19 in intestinal cells depends on angiotensin converting enzyme 2 which is the cellular receptor for SARS-CoV-2 (PubMed: 32132184). Mutations in SLC6A19 cause Hartnup disease (PMID: 15286787, PMID: 15286788).

## Storage

**Storage:**  
Store at -20°C. Stable for one year after shipment.  
**Storage Buffer:**  
PBS with 0.02% sodium azide and 50% glycerol pH 7.3.  
Aliquoting is unnecessary for -20°C storage

\*\*\* 20ul sizes contain 0.1% BSA

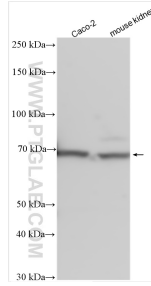
For technical support and original validation data for this product please contact:  
T: 1 (888) 4PTGLAB (1-888-478-4522) (toll free in USA), or 1(312) 455-8498 (outside USA)  
E: proteintech@ptglab.com  
W: ptglab.com

This product is exclusively available under Proteintech Group brand and is not available to purchase from any other manufacturer.

## Selected Validation Data



Various lysates were subjected to SDS PAGE followed by western blot with 27575-1-AP (SLC6A19 antibody) at dilution of 1:500 incubated at room temperature for 1.5 hours.



Immunohistochemical analysis of paraffin-embedded human small intestine tissue slide using 27575-1-AP (SLC6A19 antibody) at dilution of 1:800 (under 10x lens).



Immunohistochemical analysis of paraffin-embedded human small intestine tissue slide using 27575-1-AP (SLC6A19 antibody) at dilution of 1:800 (under 40x lens).

Various lysates were subjected to SDS PAGE followed by western blot with 27575-1-AP (SLC6A19 antibody) at dilution of 1:1000 incubated at room temperature for 1.5 hours.