

For Research Use Only

SLC24A3 Polyclonal antibody

Catalog Number: 27591-1-AP



Basic Information

Catalog Number: 27591-1-AP	GenBank Accession Number: NM_020689	Purification Method: Antigen affinity purification
Size: 150ul , Concentration: 530 ug/ml by Nanodrop;	GeneID (NCBI): 57419	Recommended Dilutions: WB: 1:500-1:2000
Source: Rabbit	UNIPROT ID: Q9HC58	
Isotype: IgG	Full Name: solute carrier family 24 (sodium/potassium/calcium exchanger), member 3	
Immunogen Catalog Number: AG26297	Calculated MW: 72 kDa	
	Observed MW: 50-60 kDa	

Applications

Tested Applications: WB, ELISA	Positive Controls: WB : mouse brain tissue, mouse heart tissue, rat brain tissue, rat heart tissue
Species Specificity: human, mouse, rat	

Background Information

SLC24A3, also known as NCKX3 (Na⁺/K⁺/Ca²⁺ exchanger 3), is a member of the solute carrier family 24 (SLC24), which comprises five K⁺-dependent Na⁺/Ca²⁺ exchangers (NCKX1-5). These transporters are critical for maintaining intracellular calcium homeostasis by coupling the extrusion of one Ca²⁺ ion and one K⁺ ion to the influx of four Na⁺ ions. SLC24A3 plays a key role in calcium signaling and homeostasis, influencing processes such as neurotransmission, smooth muscle contraction, and female reproductive physiology. Relatively high levels of SLC24A3 expression can be observed in heart tissue, consistent with the expression patterns reported in the literature. The observed molecular weight of SLC24A3 is 50-60 kDa, which is consistent with the literature description. (PMID: 21573014, PMID: 28588505)

Storage

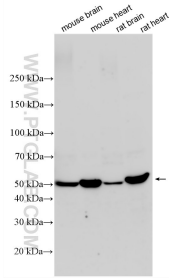
Storage:
Store at -20°C. Stable for one year after shipment.
Storage Buffer:
PBS with 0.02% sodium azide and 50% glycerol, pH7.3
Aliquoting is unnecessary for -20°C storage

*** 20ul sizes contain 0.1% BSA

For technical support and original validation data for this product please contact:
T: 1 (888) 4PTGLAB (1-888-478-4522) (toll free in USA), or 1(312) 455-8498 (outside USA)
E: proteintech@ptglab.com
W: ptglab.com

This product is exclusively available under Proteintech Group brand and is not available to purchase from any other manufacturer.

Selected Validation Data



Various lysates were subjected to SDS PAGE followed by western blot with 27591-1-AP (SLC24A3 antibody) at dilution of 1:1000 incubated at room temperature for 1.5 hours.