

For Research Use Only

Glypican 2 Polyclonal antibody

Catalog Number: 27594-1-AP



Basic Information

Catalog Number:

27594-1-AP

Size:

150ul, Concentration: 300 ug/ml by Nanodrop;

Source:

Rabbit

Isotype:

IgG

Immunogen Catalog Number:

AG26734

GenBank Accession Number:

BC027972

GeneID (NCBI):

221914

UNIPROT ID:

Q8N158

Full Name:

glypican 2

Calculated MW:

579 aa, 63 kDa

Observed MW:

62-67 kDa

Purification Method:

Antigen affinity purification

Recommended Dilutions:

WB 1:500-1:1000

Applications

Tested Applications:

WB, ELISA

Species Specificity:

mouse, rat

Positive Controls:

WB : unboiled mouse brain tissue, unboiled rat brain tissue

Background Information

GPC2 (glypican 2), which is expected to be located in cell membrane and extracellular space. It is expressed in lymphoid tissue, skin and testis. The calculated molecular weight of the protein is 62 kDa. GPC2 is mainly active in growing nervous tissues and thyroid cancer tissues (PMID: 28616017). It participates in the growth and differentiation of neuronal axons. Increasing evidence has demonstrated the overexpression of GPC2 in neuroblastoma, a kind of childhood cancer. There is a discovery that GPC2 can be employed as a diagnostic, prognostic, and immunological predictor of generalized cancers. The study may broaden the train of thought toward application of GPC2 in immunotherapy (PMID: 35345673).

Storage

Storage:

Store at -20°C. Stable for one year after shipment.

Storage Buffer:

PBS with 0.02% sodium azide and 50% glycerol pH 7.3.

Aliquoting is unnecessary for -20°C storage

*** 20ul sizes contain 0.1% BSA

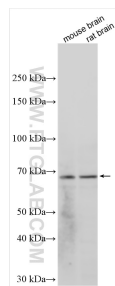
For technical support and original validation data for this product please contact:

T: 1 (888) 4PTGLAB (1-888-478-4522) (toll free in USA), or 1(312) 455-8498 (outside USA)

E: proteintech@ptglab.com
W: ptglab.com

This product is exclusively available under Proteintech Group brand and is not available to purchase from any other manufacturer.

Selected Validation Data



Various lysates were subjected to SDS PAGE followed by western blot with 27594-1-AP (GPC2 antibody) at dilution of 1:500 incubated at room temperature for 1.5 hours.