

For Research Use Only

ORMDL3 Polyclonal antibody, PBS Only

Catalog Number: 27598-1-PBS



Basic Information

Catalog Number:

27598-1-PBS

Size:

100ug, Concentration: 1 mg/ml by Nanodrop;

Source:

Rabbit

Isotype:

IgG

Immunogen Catalog Number:

AG26253

GenBank Accession Number:

BC071833

GeneID (NCBI):

94103

UNIPROT ID:

Q8N138

Full Name:

ORM1-like 3 (*S. cerevisiae*)

Calculated MW:

153 aa, 17 kDa

Observed MW:

17 kDa

Purification Method:

Antigen affinity purification

Applications

Tested Applications:

WB, Indirect ELISA

Species Specificity:

human, mouse, rat

Background Information

ORMDL3 (ORM1-like 3) is an endoplasmic-reticulum (ER)-resident transmembrane protein that negatively regulates serine palmitoyl-transferase (SPT), the first and rate-limiting enzyme of de-novo sphingolipid biosynthesis, thereby controlling cellular ceramide levels. (PMID: 31376405)

Storage

Storage:

Store at -80°C.

Storage Buffer:

PBS only, pH7.3

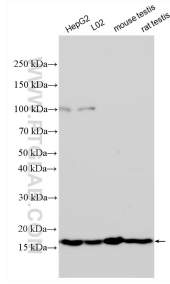
For technical support and original validation data for this product please contact:

T: 1 (888) 4PTGLAB (1-888-478-4522) (toll free in USA), or 1(312) 455-8498 (outside USA)

E: proteintech@ptglab.com
W: ptglab.com

This product is exclusively available under Proteintech Group brand and is not available to purchase from any other manufacturer.

Selected Validation Data



Various lysates were subjected to SDS PAGE followed by western blot with 27598-1-AP (ORMDL3 antibody) at dilution of 1:4000 incubated at room temperature for 1.5 hours. This data was developed using the same antibody clone with 27598-1-PBS in a different storage buffer formulation.