

For Research Use Only

CIDEB Polyclonal antibody

Catalog Number: 27600-1-AP

3 Publications



Basic Information

Catalog Number:

27600-1-AP

Size:

150ul, Concentration: 350 ug/ml by Nanodrop and 267 ug/ml by Bradford method using BSA as the standard;

Source:

Rabbit

Isotype:

IgG

Immunogen Catalog Number:

AG27003

GenBank Accession Number:

BC035970

GeneID (NCBI):

27141

UNIPROT ID:

Q9UHD4

Full Name:

cell death-inducing DFFA-like effector b

Calculated MW:

219 aa, 28 kDa

Observed MW:

28 kDa

Purification Method:

Antigen affinity purification

Recommended Dilutions:

WB 1:500-1:3000

IHC 1:50-1:500

Applications

Tested Applications:

WB, IHC, ELISA

Cited Applications:

WB

Species Specificity:

Human, mouse

Cited Species:

human, mouse

Positive Controls:

WB : HepG2 cells, L02 cells

IHC : mouse liver tissue,

Note-IHC: suggested antigen retrieval with TE buffer pH 9.0; (*) Alternatively, antigen retrieval may be performed with citrate buffer pH 6.0

Background Information

Cell death-inducing DFFA-like effector B (CIDEB), an ER and lipid droplet (LD)-associated protein primarily expressed in the liver, participated in lipid metabolism by regulating lipid droplet fusion and VLDL lipolysis. Although CIDEB is expressed at high levels in brown adipose tissue (BAT) and CIDEB is highly enriched in white adipose tissue (WAT) and BAT, CIDEB is more abundant in liver, kidney, small intestine, and colon. CIDEB is localized to endoplasmic reticulum and lipid droplets. (PMID: 30858281, PMID: 24831470, PMID: 19187774)

Notable Publications

Author	Pubmed ID	Journal	Application
Changying Li	32325343	J Hazard Mater	WB
Qiuya He	39457100	Int J Mol Sci	WB
Wen-Jing Yun	38241178	Cancer Biol Ther	WB

Storage

Storage:

Store at -20°C. Stable for one year after shipment.

Storage Buffer:

PBS with 0.02% sodium azide and 50% glycerol pH 7.3.

Aliquoting is unnecessary for -20°C storage

*** 20ul sizes contain 0.1% BSA

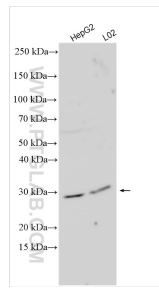
For technical support and original validation data for this product please contact:

T: 1 (888) 4PTGLAB (1-888-478-4522) (toll free in USA), or 1(312) 455-8498 (outside USA)

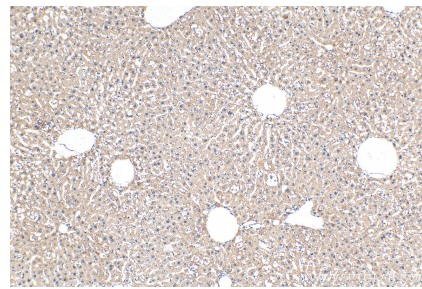
E: proteintech@ptglab.com
W: ptglab.com

This product is exclusively available under Proteintech Group brand and is not available to purchase from any other manufacturer.

Selected Validation Data



Various lysates were subjected to SDS PAGE followed by western blot with 27600-1-AP (CIDEB antibody) at dilution of 1:1500 incubated at room temperature for 1.5 hours.



Immunohistochemical analysis of paraffin-embedded mouse liver tissue slide using 27600-1-AP (CIDEB antibody) at dilution of 1:200 (under 10x lens). Heat mediated antigen retrieval with Tris-EDTA buffer (pH 9.0).