

For Research Use Only

# RanBP2 Polyclonal antibody, PBS Only

Catalog Number: 27606-1-PBS

Featured Product



## Basic Information

Catalog Number:

27606-1-PBS

Size:

100ug, Concentration: 1 mg/ml by Nanodrop;

Source:

Rabbit

Isotype:

IgG

Immunogen Catalog Number:

AG26370

GenBank Accession Number:

NM\_006267

GeneID (NCBI):

5903

UNIPROT ID:

P49792

Full Name:

RAN binding protein 2

Calculated MW:

358 kDa

Observed MW:

358 kDa

Purification Method:

Antigen affinity purification

## Applications

Tested Applications:

WB, IHC, Indirect ELISA

Species Specificity:

human, mouse, rat

## Background Information

RanBP2 (Ran-binding protein 2) is also named as p270 and NUP358, and belongs to the RanBP2 E3 ligase family. RanBP2 is E3 SUMO-protein ligase which facilitates SUMO1 and SUMO2 conjugation by UBE2I (PMID:11792325, PMID:22194619). RanBP2 involved in transport factor (Ran-GTP, karyopherin)-mediated protein import via the F-G repeat-containing domain which acts as a docking site for substrates (PMID:7775481). It is component of the nuclear export pathway (PMID:10078529). RanBP2 recruits BICD2 to the nuclear envelope and cytoplasmic stacks of nuclear pore complex known as annulate lamellae during G2 phase of cell cycle (PMID:20386726).

## Storage

Storage:

Store at -80°C.

Storage Buffer:

PBS only, pH7.3

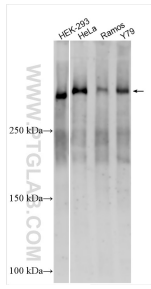
For technical support and original validation data for this product please contact:

T: 1 (888) 4PTGLAB (1-888-478-4522) (toll free in USA), or 1(312) 455-8498 (outside USA)

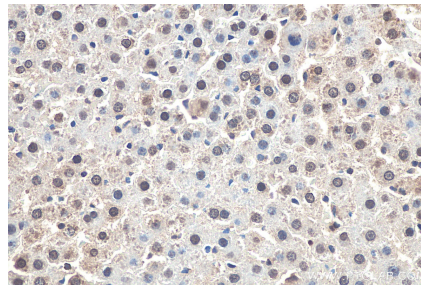
E: [proteintech@ptglab.com](mailto:proteintech@ptglab.com)  
W: [ptglab.com](http://ptglab.com)

This product is exclusively available under Proteintech Group brand and is not available to purchase from any other manufacturer.

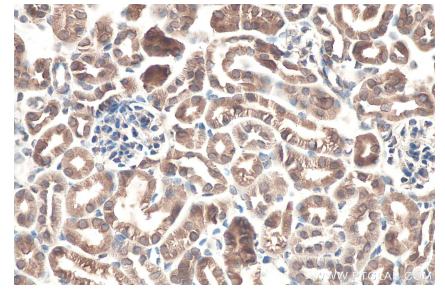
## Selected Validation Data



Various lysates were subjected to SDS PAGE followed by western blot with 27606-1-AP (RanBP2 antibody) at dilution of 1:1000 incubated at room temperature for 1.5 hours. This data was developed using the same antibody clone with 27606-1-PBS in a different storage buffer formulation.



Immunohistochemical analysis of paraffin-embedded rat liver tissue slide using 27606-1-AP (RanBP2 antibody) at dilution of 1:1000 (under 40x lens). Heat mediated antigen retrieval with Tris-EDTA buffer (pH 9.0). This data was developed using the same antibody clone with 27606-1-PBS in a different storage buffer formulation.



Immunohistochemical analysis of paraffin-embedded mouse kidney tissue slide using 27606-1-AP (RanBP2 antibody) at dilution of 1:1000 (under 40x lens). Heat mediated antigen retrieval with Tris-EDTA buffer (pH 9.0). This data was developed using the same antibody clone with 27606-1-PBS in a different storage buffer formulation.