

For Research Use Only

LRRFIP2 Polyclonal antibody

Catalog Number: 27614-1-AP



Basic Information

Catalog Number: 27614-1-AP	GenBank Accession Number: BC053668	Purification Method: Antigen affinity purification
Size: 150ul , Concentration: 300 ug/ml by Nanodrop;	GeneID (NCBI): 9209	Recommended Dilutions: WB: 1:500-1:3000
Source: Rabbit	UNIPROT ID: Q9Y608	
Isotype: IgG	Full Name: leucine rich repeat (in FLII) interacting protein 2	
Immunogen Catalog Number: AG26355	Calculated MW: 400 aa, 45 kDa	
	Observed MW: 52 kDa	

Applications

Tested Applications: WB, ELISA	Positive Controls: WB : LPS treated RAW 264.7 cells, J774A.1 cells, RAW 264.7 cells, THP-1 cells, rat lung tissue
Species Specificity: human, mouse, rat	

Background Information

LRRFIP2 (Leucine-rich repeat flightless-interacting protein 2) is a cytoplasmic protein that regulates innate immune signaling by modulating nucleic acid-sensing pathways. It interacts with flightless-I homolog and plays roles in inflammation and antiviral responses .

Storage

Storage:
Store at -20°C. Stable for one year after shipment.
Storage Buffer:
PBS with 0.02% sodium azide and 50% glycerol, pH7.3
Aliquoting is unnecessary for -20°C storage

*** 20ul sizes contain 0.1% BSA

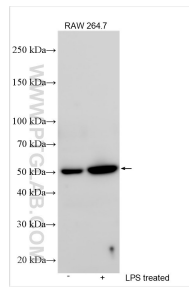
For technical support and original validation data for this product please contact:

T: 1 (888) 4PTGLAB (1-888-478-4522) (toll free in USA), or 1(312) 455-8498 (outside USA)

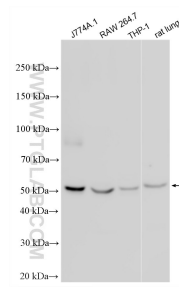
E: proteintech@ptglab.com
W: ptglab.com

This product is exclusively available under Proteintech Group brand and is not available to purchase from any other manufacturer.

Selected Validation Data



Various lysates were subjected to SDS PAGE followed by western blot with 27614-1-AP (LRRFIP2 antibody) at dilution of 1:1500 incubated at room temperature for 1.5 hours.



J774A.1 cells were subjected to SDS PAGE followed by western blot with 27614-1-AP (LRRFIP2 antibody) at dilution of 1:2000 incubated at room temperature for 1.5 hours.