

For Research Use Only

GSDMC Polyclonal antibody

Catalog Number: 27630-1-AP

Featured Product

11 Publications



Basic Information

Catalog Number:

27630-1-AP

Size:

150ul, Concentration: 400 µg/ml by Nanodrop;

Source:

Rabbit

Isotype:

IgG

Immunogen Catalog Number:

AG26365

GenBank Accession Number:

NM_031415

GeneID (NCBI):

56169

UNIPROT ID:

Q9BYG8

Full Name:

gasdermin C

Calculated MW:

58 kDa

Observed MW:

~60 kDa

Purification Method:

Antigen affinity purification

Recommended Dilutions:

WB 1:500-1:2000

IHC 1:50-1:500

Applications

Tested Applications:

WB, IHC, ELISA

Cited Applications:

WB, IHC

Species Specificity:

Human

Cited Species:

human, mouse

Note-IHC: suggested antigen retrieval with TE buffer pH 9.0; (*) Alternatively, antigen retrieval may be performed with citrate buffer pH 6.0

Positive Controls:

WB : HeLa cells, HepG2 cells

IHC : human kidney tissue,

Notable Publications

Author	Pubmed ID	Journal	Application
Keiko Sakamoto	34582748	Immunity	WB
Junwei Hou	32929201	Nat Cell Biol	WB,IHC
Cheng Yan	36199146	J Transl Med	WB

Storage

Storage:

Store at -20°C. Stable for one year after shipment.

Storage Buffer:

PBS with 0.02% sodium azide and 50% glycerol pH 7.3.

Aliquoting is unnecessary for -20°C storage

*** 20ul sizes contain 0.1% BSA

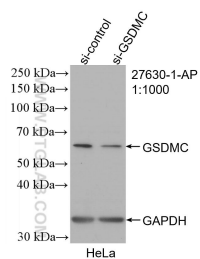
For technical support and original validation data for this product please contact:

T: 1 (888) 4PTGLAB (1-888-478-4522) (toll free in USA), or 1(312) 455-8498 (outside USA)

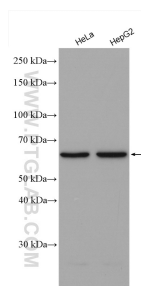
E: proteintech@ptglab.com
W: ptglab.com

This product is exclusively available under Proteintech Group brand and is not available to purchase from any other manufacturer.

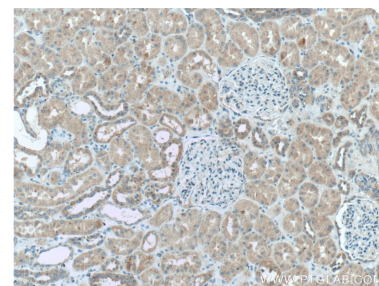
Selected Validation Data



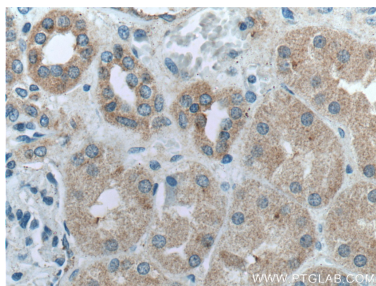
WB result of GSDMC antibody (27630-1-AP; 1:1000; incubated at room temperature for 1.5 hours) with sh-Control and sh-GSDMC transfected HeLa cells.



Various lysates were subjected to SDS PAGE followed by western blot with 27630-1-AP (GSDMC antibody) at dilution of 1:1000 incubated at room temperature for 1.5 hours.



Immunohistochemical analysis of paraffin-embedded human kidney tissue slide using 27630-1-AP (GSDMC antibody) at dilution of 1:200 (under 10x lens).



Immunohistochemical analysis of paraffin-embedded human kidney tissue slide using 27630-1-AP (GSDMC antibody) at dilution of 1:200 (under 40x lens).