

For Research Use Only

# KDEL R3 Polyclonal antibody, PBS Only

Catalog Number: 27632-1-PBS



## Basic Information

**Catalog Number:**

27632-1-PBS

**Size:**

100ug , Concentration: 1 mg/ml by Nanodrop;

**Source:**

Rabbit

**Isotype:**

IgG

**Immunogen Catalog Number:**

AG26496

**GenBank Accession Number:**

BC001277

**GeneID (NCBI):**

11015

**UNIPROT ID:**

O43731

**Full Name:**

KDEL (Lys-Asp-Glu-Leu) endoplasmic reticulum protein retention receptor 3

**Calculated MW:**

214 aa, 25 kDa

**Observed MW:**

28 kDa

**Purification Method:**

Antigen affinity purification

## Applications

**Tested Applications:**

WB, Indirect ELISA

**Species Specificity:**

human, mouse

## Storage

**Storage:**

Store at -80°C.

**Storage Buffer:**

PBS Only

For technical support and original validation data for this product please contact:

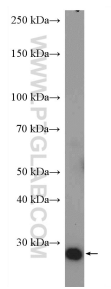
T: 1 (888) 4PTGLAB (1-888-478-4522) (toll free in USA), or 1(312) 455-8498 (outside USA)

E: [proteintech@ptglab.com](mailto:proteintech@ptglab.com)

W: [ptglab.com](http://ptglab.com)

This product is exclusively available under Proteintech Group brand and is not available to purchase from any other manufacturer.

## Selected Validation Data



NIH/3T3 cells were subjected to SDS PAGE followed by western blot with 27632-1-AP (KDEL3 antibody) at dilution of 1:1000 incubated at room temperature for 1.5 hours. This data was developed using the same antibody clone with 27632-1-PBS in a different storage buffer formulation.