

For Research Use Only

CHAF1B Polyclonal antibody

Catalog Number: 27633-1-AP

Featured Product

2 Publications



Basic Information

Catalog Number:

27633-1-AP

Size:

150ul, Concentration: 850 ug/ml by Nanodrop and 400 ug/ml by Bradford method using BSA as the standard;

Source:

Rabbit

Isotype:

IgG

Immunogen Catalog Number:

AG26504

GenBank Accession Number:

BC021218

GeneID (NCBI):

8208

UNIPROT ID:

Q13112

Full Name:

chromatin assembly factor 1, subunit B (p60)

Calculated MW:

559 aa, 61 kDa

Observed MW:

65-70 kDa

Purification Method:

Antigen affinity purification

Recommended Dilutions:

WB 1:1000-1:6000

IHC 1:250-1:1000

Applications

Tested Applications:

WB, IHC, ELISA

Cited Applications:

WB, ChIP

Species Specificity:

human

Cited Species:

human

Positive Controls:

WB: Caco-2 cells, HeLa cells, HepG2 cells

IHC: human intrahepatic cholangiocarcinoma tissue, human ovary cancer tissue

Note-IHC: suggested antigen retrieval with TE buffer pH 9.0; (*) Alternatively, antigen retrieval may be performed with citrate buffer pH 6.0

Background Information

CHAF1B, also named as CAF1A, CAF1P60, MPHOSPH7, MPP7, is a 559 amino acid protein, which belongs to the WD repeat HIR1 family. CHAF1B as a subunit of the CAF-1 complex that contains RBBP4, CHAF1B and CHAF1A. CHAF1B is thought to mediate chromatin assembly in DNA replication and DNA repair and assembles histone octamers onto replicating DNA in vitro. The calculated molecular weight of CHAF1B is 61 kDa, but molecular weight of CHAF1B is detected about 65-70 kDa.

Notable Publications

Author	Pubmed ID	Journal	Application
Shuai Huang	33370630	Biomed Pharmacother	WB
Diana Saleiro	37377894	Cancer Res Commun	ChIP

Storage

Storage:

Store at -20°C. Stable for one year after shipment.

Storage Buffer:

PBS with 0.02% sodium azide and 50% glycerol pH 7.3.

Aliquoting is unnecessary for -20°C storage

*** 20ul sizes contain 0.1% BSA

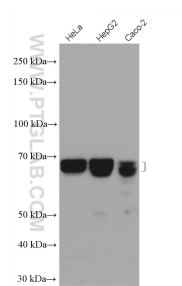
For technical support and original validation data for this product please contact:

T: 1 (888) 4PTGLAB (1-888-478-4522) (toll free in USA), or 1(312) 455-8498 (outside USA)

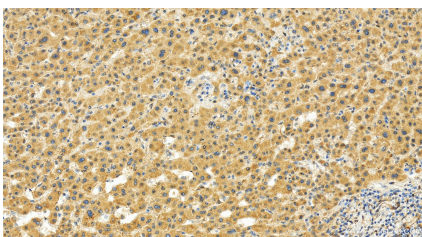
E: proteintech@ptglab.com
W: ptglab.com

This product is exclusively available under Proteintech Group brand and is not available to purchase from any other manufacturer.

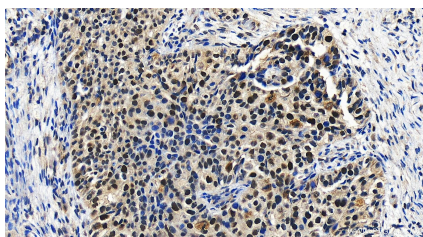
Selected Validation Data



Various cells were subjected to SDS PAGE followed by western blot with 27633-1-AP (CHAF1B antibody) at dilution of 1:3000 incubated at room temperature for 1.5 hours.



Immunohistochemical analysis of paraffin-embedded human intrahepatic cholangiocarcinoma tissue slide using 27633-1-AP (CHAF1B antibody) at dilution of 1:500 (under 20x lens). Heat mediated antigen retrieval with Tris-EDTA buffer (pH 9.0).



Immunohistochemical analysis of paraffin-embedded human ovary cancer tissue slide using 27633-1-AP (CHAF1B antibody) at dilution of 1:500 (under 20x lens). Heat mediated antigen retrieval with Tris-EDTA buffer (pH 9.0).