

For Research Use Only

SLC38A6 Polyclonal antibody

Catalog Number: 27636-1-AP



Basic Information

Catalog Number: 27636-1-AP	GenBank Accession Number: BC110378	Purification Method: Antigen affinity purification
Size: 150ul , Concentration: 280 ug/ml by Nanodrop;	GeneID (NCBI): 145389	Recommended Dilutions: WB 1:500-1:1000
Source: Rabbit	UNIPROT ID: Q8IZM9	IHC 1:50-1:500
Isotype: IgG	Full Name: solute carrier family 38, member 6	IF-P 1:400-1:1600
Immunogen Catalog Number: AG24654	Calculated MW: 456 aa, 51 kDa	
	Observed MW: 43 kDa	

Applications

Tested Applications: WB, IHC, IF-P, ELISA	Positive Controls:
Species Specificity: human, mouse	WB : SH-SY5Y cells,
Note-IHC: suggested antigen retrieval with TE buffer pH 9.0; (*) Alternatively, antigen retrieval may be performed with citrate buffer pH 6.0	IHC : mouse brain tissue,
	IF-P : mouse brain tissue,

Background Information

SLC38A6 is also known as SNAT6 and belongs to the amino acid/polyamine transporter 2 family. SLC38A6 is probably a sodium-dependent amino acid/proton antiporter or a neuronal transporter for glutamate. SLC38A6 has 2 isoforms with the molecular mass of 51 kDa and 58 kDa. The observed molecular weight of SLC38A6 is 43 kDa, which is consistent with the description in the literature of MW between 37 kDa and 50 kDa (PMID: 24752331).

Storage

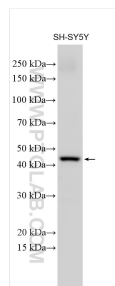
Storage:
Store at -20°C. Stable for one year after shipment.
Storage Buffer:
PBS with 0.02% sodium azide and 50% glycerol pH 7.3.
Aliquoting is unnecessary for -20°C storage

*** 20ul sizes contain 0.1% BSA

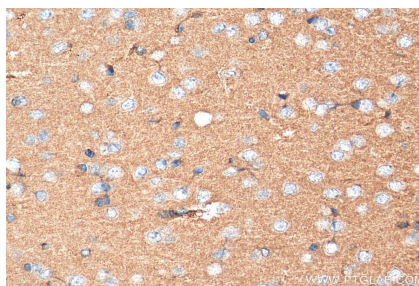
For technical support and original validation data for this product please contact:
T: 1 (888) 4PTGLAB (1-888-478-4522) (toll free in USA), or 1(312) 455-8498 (outside USA)
E: proteintech@ptglab.com
W: ptglab.com

This product is exclusively available under Proteintech Group brand and is not available to purchase from any other manufacturer.

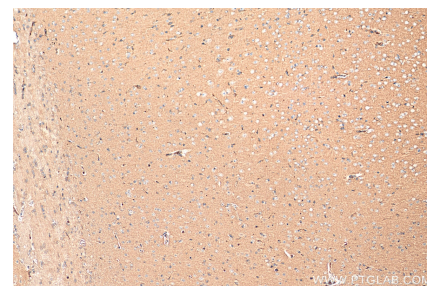
Selected Validation Data



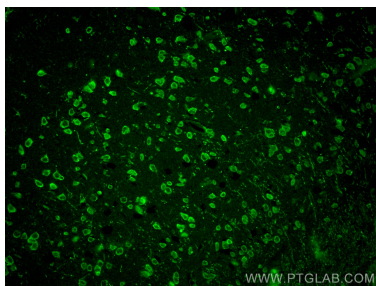
SH-SY5Y cells were subjected to SDS PAGE followed by western blot with 27636-1-AP (SLC38A6 antibody) at dilution of 1:500 incubated at room temperature for 1.5 hours.



Immunohistochemical analysis of paraffin-embedded mouse brain tissue slide using 27636-1-AP (SLC38A6 antibody) at dilution of 1:200 (under 40x lens). Heat mediated antigen retrieval with Tris-EDTA buffer (pH 9.0).



Immunohistochemical analysis of paraffin-embedded mouse brain tissue slide using 27636-1-AP (SLC38A6 antibody) at dilution of 1:200 (under 10x lens). Heat mediated antigen retrieval with Tris-EDTA buffer (pH 9.0).



Immunofluorescent analysis of (4% PFA) fixed mouse brain tissue using SLC38A6 antibody (27636-1-AP) at dilution of 1:800 and CoraLite®488-Conjugated AffiniPure Goat Anti-Rabbit IgG(H+L).