

For Research Use Only

# SLC38A6 Polyclonal antibody, PBS Only

Catalog Number: 27636-1-PBS



## Basic Information

<b>Catalog Number:</b> 27636-1-PBS	<b>GenBank Accession Number:</b> BC110378	<b>Purification Method:</b> Antigen affinity purification
<b>Size:</b> 100ug , Concentration: 1 mg/ml by Nanodrop;	<b>GeneID (NCBI):</b> 145389	
<b>Source:</b> Rabbit	<b>UNIPROT ID:</b> Q8IZM9	
<b>Isotype:</b> IgG	<b>Full Name:</b> solute carrier family 38, member 6	
<b>Immunogen Catalog Number:</b> AG24654	<b>Calculated MW:</b> 456 aa, 51 kDa	
	<b>Observed MW:</b> 43 kDa	

## Applications

**Tested Applications:**  
WB, IHC, IF-P, Indirect ELISA

**Species Specificity:**  
human, mouse

## Background Information

SLC38A6 is also known as SNAT6 and belongs to the amino acid/polyamine transporter 2 family. SLC38A6 is probably a sodium-dependent amino acid/proton antiporter or a neuronal transporter for glutamate. SLC38A6 has 2 isoforms with the molecular mass of 51 kDa and 58 kDa. The observed molecular weight of SLC38A6 is 43 kDa, which is consistent with the description in the literature of MW between 37 kDa and 50 kDa (PMID: 24752331).

## Storage

**Storage:**  
Store at -80°C.  
**Storage Buffer:**  
PBS only, pH7.3

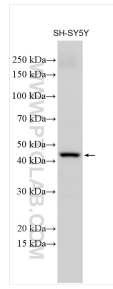
For technical support and original validation data for this product please contact:

T: 1 (888) 4PTGLAB (1-888-478-4522) (toll free in USA), or 1(312) 455-8498 (outside USA)

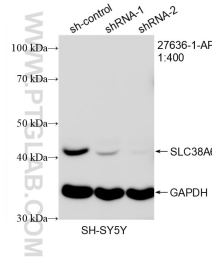
E: [proteintech@ptglab.com](mailto:proteintech@ptglab.com)  
W: [ptglab.com](http://ptglab.com)

**This product is exclusively available under Proteintech Group brand and is not available to purchase from any other manufacturer.**

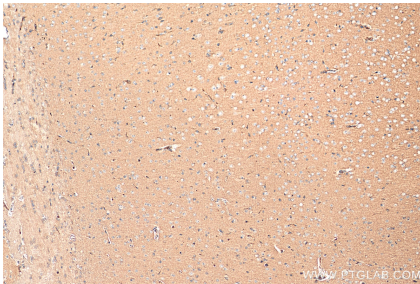
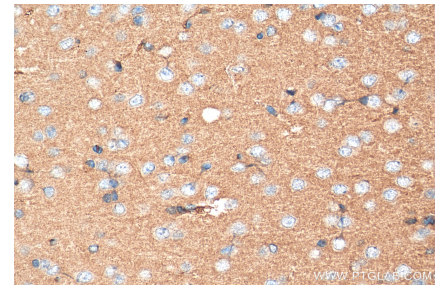
## Selected Validation Data



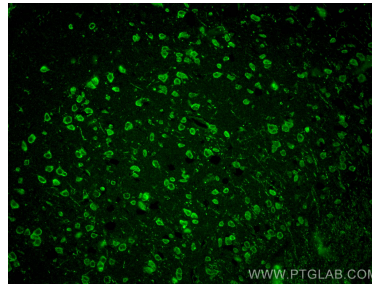
SH-SY5Y cells were subjected to SDS PAGE followed by western blot with 27636-1-AP (SLC38A6 antibody) at dilution of 1:500 incubated at room temperature for 1.5 hours. This data was developed using the same antibody clone with 27636-1-PBS in a different storage buffer formulation.



WB result of SLC38A6 antibody (27636-1-AP; 1:400; incubated at room temperature for 1.5 hours) with sh-Control and sh-SLC38A6 transfected SH-SY5Y cells. This data was developed using the same antibody clone with 27636-1-PBS in a different storage buffer formulation.



Immunohistochemical analysis of paraffin-embedded mouse brain tissue slide using 27636-1-AP (SLC38A6 antibody) at dilution of 1:200 (under 10x lens). Heat mediated antigen retrieval with Tris-EDTA buffer (pH 9.0). This data was developed using the same antibody clone with 27636-1-PBS in a different storage buffer formulation.



Immunofluorescent analysis of (4% PFA) fixed mouse brain tissue using SLC38A6 antibody (27636-1-AP) at dilution of 1:800 and CoralLite® 488-Conjugated AffiniPure Goat Anti-Rabbit IgG(H+L). This data was developed using the same antibody clone with 27636-1-PBS in a different storage buffer formulation.