

For Research Use Only

Claudin 16 Polyclonal antibody

Catalog Number: 27638-1-AP



Basic Information

Catalog Number: 27638-1-AP	GenBank Accession Number: BC069682	Purification Method: Antigen affinity purification
Size: 150ul, Concentration: 260 µg/ml by Nanodrop and 200 µg/ml by Bradford method using BSA as the standard;	GeneID (NCBI): 10686	Recommended Dilutions: WB 1:1000-1:4000
Source: Rabbit	Full Name: claudin 16	
Isotype: IgG	Calculated MW: 305 aa, 34 kDa	
Immunogen Catalog Number: AG26531	Observed MW: 34 kDa	

Applications

Tested Applications: WB, ELISA	Positive Controls:
Species Specificity: Human, Canine	WB: A549 cells, HEK-293 cells, HepG2 cells, MDCK cells

Background Information

Storage

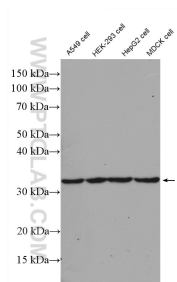
Storage:
Store at -20°C. Stable for one year after shipment.
Storage Buffer:
PBS with 0.02% sodium azide and 50% glycerol pH 7.3.
Aliquoting is unnecessary for -20°C storage

*** 20ul sizes contain 0.1% BSA

For technical support and original validation data for this product please contact:
T: 1 (888) 4PTGLAB (1-888-478-4522) (toll free in USA), or 1(312) 455-8498 (outside USA)
E: proteintech@ptglab.com
W: ptglab.com

This product is exclusively available under Proteintech Group brand and is not available to purchase from any other manufacturer.

Selected Validation Data



A549 cells, HEK-293 cells, HepG2 cells, and MDCK cells were subjected to SDS PAGE followed by western blot with 27638-1-AP (Claudin 16 antibody) at dilution of 1:2000 incubated at room temperature for 1.5 hours.