

For Research Use Only

CRTC1 Polyclonal antibody

Catalog Number: 27647-1-AP

2 Publications



Basic Information

Catalog Number:

27647-1-AP

Size:

150ul, Concentration: 900 ug/ml by Nanodrop and 400 ug/ml by Bradford method using BSA as the standard;

Source:

Rabbit

Isotype:

IgG

Immunogen Catalog Number:

AG26494

GenBank Accession Number:

BC017075

GeneID (NCBI):

23373

UNIPROT ID:

Q6UUV9

Full Name:

CREB regulated transcription coactivator 1

Calculated MW:

67 kDa

Observed MW:

68-75 kDa

Purification Method:

Antigen affinity purification

Recommended Dilutions:

WB 1:500-1:2000

IHC 1:250-1:1000

Applications

Tested Applications:

WB, IHC, ELISA

Cited Applications:

WB

Species Specificity:

human, mouse

Cited Species:

human, rat

Positive Controls:

WB : Neuro-2a cells, HeLa cells, HEK-293T cells

IHC : human ovary cancer tissue,

Note-IHC: suggested antigen retrieval with TE buffer pH 9.0; (*) Alternatively, antigen retrieval may be performed with citrate buffer pH 6.0

Background Information

CRTC1, also named as Transducer of CREB protein 1, is a 634 amino acid protein, which belongs to the TORC family. CRTC1 is highly expressed in adult and fetal brain and is low expressed in other tissues such as heart, spleen, lung, skeletal muscle, salivary gland, ovary and kidney. CRTC1 localizes in Cytoplasm when is phosphorylated by SIK or AMPK and when sequestered by 14-3-3 proteins (PubMed:16817901). it translocates to the nucleus on Ser-151 dephosphorylation, instigated by a number of factors including calcium ion and cAMP levels. CRTC1 as a Transcriptional coactivator for CREB1 which activates transcription through both consensus and variant cAMP response element (CRE) sites. The calculated molecular weight of CRTC1 is 68 kDa, but the modified protein is about 70-75 kDa.

Notable Publications

Author	Pubmed ID	Journal	Application
Lei Qiang	32866426	Autophagy	WB
Wanyu Tu	37783262	Brain Res	WB

Storage

Storage:

Store at -20°C. Stable for one year after shipment.

Storage Buffer:

PBS with 0.02% sodium azide and 50% glycerol pH 7.3.

Aliquoting is unnecessary for -20°C storage

*** 20ul sizes contain 0.1% BSA

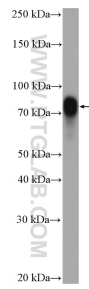
For technical support and original validation data for this product please contact:

T: 1 (888) 4PTGLAB (1-888-478-4522) (toll free in USA), or 1(312) 455-8498 (outside USA)

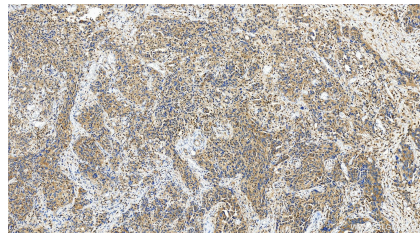
E: proteintech@ptglab.com
W: ptglab.com

This product is exclusively available under Proteintech Group brand and is not available to purchase from any other manufacturer.

Selected Validation Data



Neuro-2a cells were subjected to SDS PAGE followed by western blot with 27647-1-AP (CRTC1 antibody) at dilution of 1:1000 incubated at room temperature for 1.5 hours.



Immunohistochemical analysis of paraffin-embedded human ovary cancer tissue slide using 27647-1-AP (CRTC1 antibody) at dilution of 1:500 (under 20x lens). Heat mediated antigen retrieval with Tris-EDTA buffer (pH 9.0).